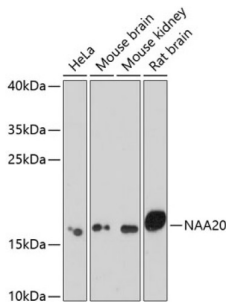
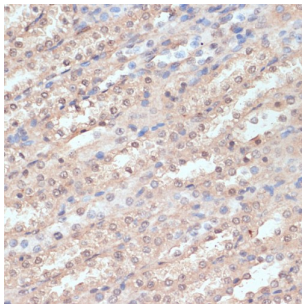


N-Alpha-Acetyltransferase 20 (NAA20) Antibody

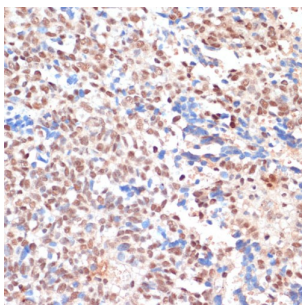
Catalogue No.: abx005368



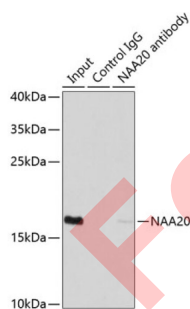
Western blot analysis of various lysates using NAA20 Antibody at 1/1000 dilution. Secondary antibody: HRP-conjugated Goat anti-Rabbit IgG (H+L) at 1/10000 dilution. Lysates/proteins: 25 µg per lane. Blocking buffer: 3% nonfat dry milk in TBST. Exposure time: 90s.



Immunohistochemistry analysis of paraffin-embedded Rat kidney using NAA20 Antibody at dilution of 1/100 (40x lens). Microwave antigen retrieval performed in 0.01 M PBS Buffer (pH 7.2) prior to IHC staining.



Immunohistochemistry analysis of paraffin-embedded Human oophoroma using NAA20 Antibody at dilution of 1/100 (40x lens). Microwave antigen retrieval performed in 0.01 M PBS Buffer (pH 7.2) prior to IHC staining.



Immunoprecipitation analysis of 200 µg extracts of MCF7 cells using 1 µg NAA20 antibody. Western blot was performed from the immunoprecipitate using NAA20 antibody at a dilution of 1/1000.

NAA20 Antibody is a Rabbit Polyclonal antibody against NAA20. NAT5 is a component of N-acetyltransferase complex B (NatB). Human NatB performs cotranslational N(alpha)-terminal acetylation of methionine residues when they are followed by asparagine (Starheim et al., 2008).

Target: N-Alpha-Acetyltransferase 20 (NAA20)

Clonality: Polyclonal

Datasheet

Version: 3.0.0
Revision date: 03 Sep 2025



| | |
|-------------------------------|--|
| Reactivity: | Human, Mouse, Rat |
| Tested Applications: | ELISA, WB, IHC, IP |
| Host: | Rabbit |
| Recommended dilutions: | ELISA: 1 µg/ml, WB: 1/500 - 1/2000, IHC-P: 1/50 - 1/200, IP: 0.5 µg - 4 µg antibody per 200 µg - 400 µg extracts of whole cells. Not tested in IHC-F. Optimal dilutions/concentrations should be determined by the end user. |
| Conjugation: | Unconjugated |
| Immunogen: | Recombinant protein corresponding to NAA20. The exact sequence is proprietary. |
| Isotype: | IgG |
| Form: | Liquid |
| Purification: | Purified by affinity chromatography. |
| Storage: | Aliquot and store at -20°C. Avoid repeated freeze/thaw cycles. |
| UniProt Primary AC: | P61599 (UniProt , ExPASy) |
| Gene Symbol: | NAA20 |
| GeneID: | 51126 |
| NCBI Accession: | NP_057184.1 |
| KEGG: | hsa:51126 |
| String: | 9606.ENSP00000335636 |
| Molecular Weight: | Calculated MW: 20 kDa Observed MW: 20 kDa |
| Buffer: | PBS, pH 7.3, containing 0.02% sodium azide, 50% glycerol. |
| Concentration: | > 0.2 mg/ml |
| Note: | THIS PRODUCT IS FOR RESEARCH USE ONLY. NOT FOR USE IN DIAGNOSTIC, THERAPEUTIC OR COSMETIC PROCEDURES. NOT FOR HUMAN OR ANIMAL CONSUMPTION. |