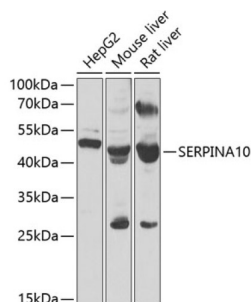
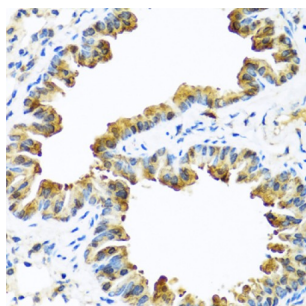


## Protein Z Dependent Protease Inhibitor (SERPINA10) Antibody

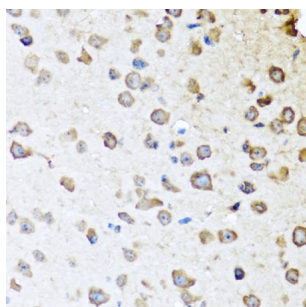
Catalogue No.: abx005369



Western blot analysis of various lysates using SERPINA10 Antibody at 1/1000 dilution. Secondary antibody: HRP-conjugated Goat anti-Rabbit IgG (H+L) at 1/10000 dilution. Lysates/proteins: 25 µg per lane. Blocking buffer: 3% nonfat dry milk in TBST. Exposure time: 120s.



Immunohistochemistry analysis of paraffin-embedded Mouse lung using SERPINA10 Antibody at dilution of 1/100 (40x lens). Microwave antigen retrieval performed in 0.01 M PBS Buffer (pH 7.2) prior to IHC staining.



Immunohistochemistry analysis of paraffin-embedded Mouse brain using SERPINA10 Antibody at dilution of 1/100 (40x lens). Microwave antigen retrieval performed in 0.01 M PBS Buffer (pH 7.2) prior to IHC staining.

SERPINA10 Antibody is a Rabbit Polyclonal antibody against SERPINA10. The protein encoded by this gene belongs to the serpin family. It is predominantly expressed in the liver and secreted in plasma. It inhibits the activity of coagulation factors Xa and XIa in the presence of protein Z, calcium and phospholipid. Mutations in this gene are associated with venous thrombosis. Alternatively spliced transcript variants have been found for this gene.

**Target:** Protein Z Dependent Protease Inhibitor (SERPINA10)

**Clonality:** Polyclonal

**Reactivity:** Human, Mouse, Rat

**Tested Applications:** ELISA, WB, IHC

**Host:** Rabbit

**Recommended dilutions:** ELISA: 1 µg/ml, WB: 1/500 - 1/2000, IHC-P: 1/50 - 1/100. Not tested in IHC-F. Optimal dilutions/concentrations should be determined by the end user.

# Datasheet

Version: 6.0.0  
Revision date: 11 Oct 2025



<b>Conjugation:</b>	Unconjugated
<b>Immunogen:</b>	Recombinant protein corresponding to SERPINA10. The exact sequence is proprietary.
<b>Isotype:</b>	IgG
<b>Form:</b>	Liquid
<b>Purification:</b>	Purified by affinity chromatography.
<b>Storage:</b>	Aliquot and store at -20°C. Avoid repeated freeze/thaw cycles.
<b>UniProt Primary AC:</b>	Q9UK55 ( <a href="#">UniProt</a> , <a href="#">ExPASy</a> )
<b>Gene Symbol:</b>	SERPINA10
<b>GeneID:</b>	<a href="#">51156</a>
<b>NCBI Accession:</b>	NP_001094077.1
<b>String:</b>	<a href="#">9606.ENSP00000261994</a>
<b>Molecular Weight:</b>	Calculated MW: 51 kDa Observed MW: 51 kDa
<b>Buffer:</b>	PBS, pH 7.3, containing 0.02% sodium azide, 50% glycerol.
<b>Concentration:</b>	> 0.2 mg/ml
<b>Note:</b>	THIS PRODUCT IS FOR RESEARCH USE ONLY. NOT FOR USE IN DIAGNOSTIC, THERAPEUTIC OR COSMETIC PROCEDURES. NOT FOR HUMAN OR ANIMAL CONSUMPTION.