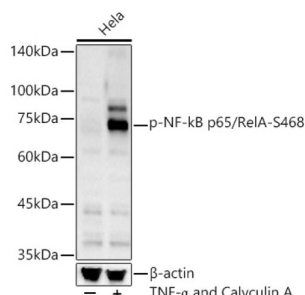
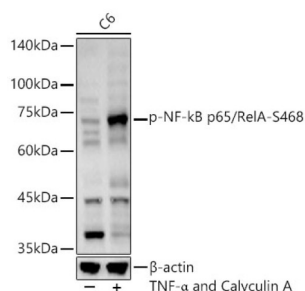


RELA (pS468) Antibody

Catalogue No.: abx000493



Western blot analysis of lysates from HeLa cells, using Phospho-NF-kB p65/RelA-S468 Antibody at 1/400 dilution. HeLa cells were treated by TNF- α (20 ng/ml) and Calyculin A (100 nM) at 37 °C for 30 minutes after serum-starvation overnight. Secondary antibody: HRP-conjugated Goat anti-Rabbit IgG (H+L) at 1/10000 dilution. Lysates/proteins: 25 μ g per lane. Blocking buffer: 3% nonfat dry milk in TBST. Exposure time: 60s.



Western blot analysis of lysates from C6 cells, using Phospho-NF-kB p65/RelA-S468 Antibody at 1/400 dilution. C6 cells were treated by TNF- α (20 ng/ml) and Calyculin A (100 nM) at 37 °C for 30 minutes after serum-starvation overnight. Secondary antibody: HRP-conjugated Goat anti-Rabbit IgG (H+L) at 1/10000 dilution. Lysates/proteins: 25 μ g per lane. Blocking buffer: 3% nonfat dry milk in TBST. Exposure time: 90s.

RELA (pS468) Antibody is a Rabbit Polyclonal antibody against RELA (pS468). NF-kappa-B is a ubiquitous transcription factor involved in several biological processes. It is held in the cytoplasm in an inactive state by specific inhibitors. Upon degradation of the inhibitor, NF-kappa-B moves to the nucleus and activates transcription of specific genes. NF-kappa-B is composed of NFKB1 or NFKB2 bound to either REL, RELA, or RELB. The most abundant form of NF-kappa-B is NFKB1 complexed with the product of this gene, RELA. Four transcript variants encoding different isoforms have been found for this gene.

Target: RELA (pS468)

Clonality: Polyclonal

Reactivity: Human, Rat

Tested Applications: ELISA, WB

Host: Rabbit

Recommended dilutions: ELISA: 1 μ g/ml, WB: 1/100 - 1/500. Optimal dilutions/concentrations should be determined by the end user.

Conjugation: Unconjugated

Immunogen: Synthetic peptide corresponding to RELA (pS468). The exact sequence is proprietary.

Isotype: IgG

Datasheet

Version: 5.0.0

Revision date: 01 Oct 2025



Form:	Liquid
Purification:	Purified by affinity chromatography.
Storage:	Aliquot and store at -20°C. Avoid repeated freeze/thaw cycles.
UniProt Primary AC:	Q04206 (UniProt , ExPASy)
Gene Symbol:	RELA
GeneID:	5970
NCBI Accession:	NP_001138610.1
Molecular Weight:	Calculated MW: 60 kDa Observed MW: 60 kDa
Buffer:	PBS, pH 7.3, containing 0.05% Proclin-300, 50% glycerol.
Concentration:	> 0.2 mg/ml
Note:	THIS PRODUCT IS FOR RESEARCH USE ONLY. NOT FOR USE IN DIAGNOSTIC, THERAPEUTIC OR COSMETIC PROCEDURES. NOT FOR HUMAN OR ANIMAL CONSUMPTION.

For Reference Only