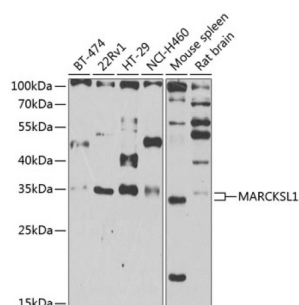


MARCKS-Like Protein 1 (MARCKSL1) Antibody

Catalogue No.: abx005386



Western blot analysis of extracts of various cell lines using MARCKSL1 Antibody (1/1000 dilution).

MARCKSL1 Antibody is a Rabbit Polyclonal antibody against MARCKSL1. This gene encodes a member of the myristoylated alanine-rich C-kinase substrate (MARCKS) family. Members of this family play a role in cytoskeletal regulation, protein kinase C signaling and calmodulin signaling. The encoded protein affects the formation of adherens junction. Alternative splicing results in multiple transcript variants. Pseudogenes of this gene are located on the long arm of chromosomes 6 and 10.

Target: MARCKS-Like Protein 1 (MARCKSL1)

Clonality: Polyclonal

Reactivity: Human, Mouse, Rat

Tested Applications: WB

Host: Rabbit

Recommended dilutions: WB: 1/500 - 1/2000. Optimal dilutions/concentrations should be determined by the end user.

Conjugation: Unconjugated

Immunogen: Recombinant fusion protein corresponding to human MARCKSL1

Isotype: IgG

Form: Liquid

Purification: Purified by affinity chromatography.

Storage: Aliquot and store at -20°C. Avoid repeated freeze/thaw cycles.

UniProt Primary AC: P49006 ([UniProt](#), [ExPASy](#))

Gene Symbol: MARCKSL1

Datasheet

Version: 5.0.0
Revision date: 06 Oct 2025



GeneID: [65108](#)

NCBI Accession: NP_075385.1

KEGG: hsa:65108

String: [9606.ENSP00000362638](#)

Molecular Weight: Calculated MW: 19 kDa
Observed MW: 35 kDa

Buffer: PBS, pH 7.3, containing 0.02% sodium azide, 50% glycerol.

Concentration: 1 mg/ml

Note: THIS PRODUCT IS FOR RESEARCH USE ONLY. NOT FOR USE IN DIAGNOSTIC, THERAPEUTIC OR COSMETIC PROCEDURES. NOT FOR HUMAN OR ANIMAL CONSUMPTION.

For Reference Only