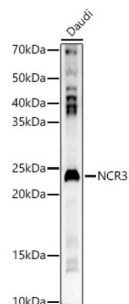


Natural Cytotoxicity Triggering Receptor 3 (NCR3) Antibody

Catalogue No.: abx005398



Western blot analysis of lysates from Daudi cells, using NCR3 Antibody at 1/3000 dilution. Secondary antibody: HRP-conjugated Goat anti-Rabbit IgG (H+L) at 1/10000 dilution. Lysates/proteins: 25 µg per lane. Blocking buffer: 3% nonfat dry milk in TBST. Exposure time: 180s.

NCR3 Antibody is a Rabbit Polyclonal antibody against NCR3. The protein encoded by this gene is a natural cytotoxicity receptor (NCR) that may aid NK cells in the lysis of tumor cells. The encoded protein interacts with CD3-zeta (CD247), a T-cell receptor. A single nucleotide polymorphism in the 5' untranslated region of this gene has been associated with mild malaria susceptibility. Three transcript variants encoding different isoforms have been found for this gene.

Target:	Natural Cytotoxicity Triggering Receptor 3 (NCR3)
Clonality:	Polyclonal
Reactivity:	Human
Tested Applications:	ELISA, WB
Host:	Rabbit
Recommended dilutions:	ELISA: 1 µg/ml, WB: 1/500 - 1/2000. Optimal dilutions/concentrations should be determined by the end user.
Conjugation:	Unconjugated
Immunogen:	Recombinant protein corresponding to NCR3. The exact sequence is proprietary.
Isotype:	IgG
Form:	Liquid
Purification:	Purified by affinity chromatography.
Storage:	Aliquot and store at -20°C. Avoid repeated freeze/thaw cycles.
UniProt Primary AC:	O14931 (UniProt , ExPASy)
Gene Symbol:	NCR3

Datasheet

Version: 3.0.0

Revision date: 09 Oct 2025



GeneID: [259197](#)

NCBI Accession: NP_667341.1

KEGG: hsa:259197

String: [9606.ENSP00000342156](#)

Molecular Weight: Calculated MW: 22 kDa
Observed MW: 22 kDa

Buffer: PBS, pH 7.3, containing 0.02% sodium azide, 50% glycerol.

Concentration: > 0.2 mg/ml

Note: THIS PRODUCT IS FOR RESEARCH USE ONLY. NOT FOR USE IN DIAGNOSTIC, THERAPEUTIC OR COSMETIC PROCEDURES. NOT FOR HUMAN OR ANIMAL CONSUMPTION.

For Reference Only