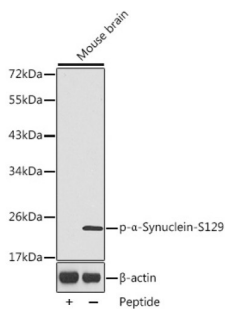


SNCA (pS129) Antibody

Catalogue No.: abx000497



SNCA (pS129) Antibody is a Rabbit Polyclonal antibody against SNCA (pS129). Alpha-synuclein is a member of the synuclein family, which also includes beta- and gamma-synuclein. Synucleins are abundantly expressed in the brain and alpha- and beta-synuclein inhibit phospholipase D2 selectively. SNCA may serve to integrate presynaptic signaling and membrane trafficking. Defects in SNCA have been implicated in the pathogenesis of Parkinson disease. SNCA peptides are a major component of amyloid plaques in the brains of patients with Alzheimer's disease. Four alternatively spliced transcripts encoding two different isoforms have been identified for this gene.

Target:	SNCA (pS129)
Clonality:	Polyclonal
Reactivity:	Human, Mouse, Rat
Tested Applications:	ELISA, WB
Host:	Rabbit
Recommended dilutions:	ELISA: 1 µg/ml, WB: 1/500 - 1/2000. Optimal dilutions/concentrations should be determined by the end user.
Conjugation:	Unconjugated
Immunogen:	Synthetic peptide corresponding to SNCA (pS129). The exact sequence is proprietary.
Isotype:	IgG
Form:	Liquid
Purification:	Purified by affinity chromatography.
Storage:	Aliquot and store at -20°C. Avoid repeated freeze/thaw cycles.
UniProt Primary AC:	P37840 (UniProt , ExPASy)

Datasheet

Version: 6.0.0

Revision date: 14 Sep 2025



Gene Symbol: SNCA

GeneID: [6622](#)

NCBI Accession: NP_000336.1

Molecular Weight: Calculated MW: 14 kDa
Observed MW: 20 kDa

Buffer: PBS, pH 7.3, containing 0.01% thimerosal, 50% glycerol.

Concentration: > 0.2 mg/ml

Note: THIS PRODUCT IS FOR RESEARCH USE ONLY. NOT FOR USE IN DIAGNOSTIC, THERAPEUTIC OR COSMETIC PROCEDURES. NOT FOR HUMAN OR ANIMAL CONSUMPTION.

For Reference Only