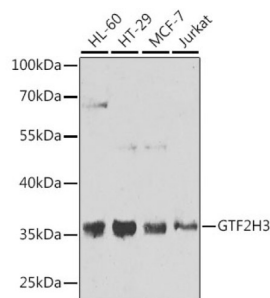
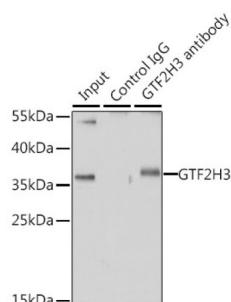


General Transcription Factor IIH, Polypeptide 3 (GTF2H3) Antibody

Catalogue No.: abx005423



Western blot analysis of various lysates using GTF2H3 Antibody at 1/1000 dilution. Secondary antibody: HRP-conjugated Goat anti-Rabbit IgG (H+L) at 1/10000 dilution. Lysates/proteins: 25 µg per lane. Blocking buffer: 3% nonfat dry milk in TBST. Exposure time: 10s.



Immunoprecipitation analysis of 200 µg extracts of HT-29 cells using 1 µg GTF2H3 antibody. Western blot was performed from the immunoprecipitate using GTF2H3 antibody at a dilution of 1/1000.

GTF2H3 Antibody is a Rabbit Polyclonal antibody against GTF2H3. This gene encodes a member of the TFB4 family. The encoded protein is a subunit of the core-TFIIF basal transcription factor and localizes to the nucleus. The encoded protein is involved in RNA transcription by RNA polymerase II and nucleotide excision repair and associates with the Cdk-activating kinase complex. Alternative splicing results in multiple transcript variants. A related pseudogene has been identified on chromosome 14.

Target: General Transcription Factor IIH, Polypeptide 3 (GTF2H3)

Clonality: Polyclonal

Reactivity: Human, Mouse

Tested Applications: ELISA, WB, IP

Host: Rabbit

Recommended dilutions: ELISA: 1 µg/ml, WB: 1/500 - 1/2000, IP: 0.5 µg - 4 µg antibody per 200 µg - 400 µg extracts of whole cells. Optimal dilutions/concentrations should be determined by the end user.

Conjugation: Unconjugated

Immunogen: Recombinant protein corresponding to GTF2H3. The exact sequence is proprietary.

Isotype: IgG

Datasheet

Version: 4.0.0
Revision date: 08 Oct 2025



Form:	Liquid
Purification:	Purified by affinity chromatography.
Storage:	Aliquot and store at -20°C. Avoid repeated freeze/thaw cycles.
UniProt Primary AC:	Q13889 (UniProt , ExPASy)
Gene Symbol:	GTF2H3
GeneID:	2967
NCBI Accession:	NP_001507.2
KEGG:	hsa:2967
String:	9606.ENSP00000445162
Molecular Weight:	Calculated MW: 34 kDa Observed MW: 36 kDa
Buffer:	PBS, pH 7.3, containing 0.02% sodium azide, 50% glycerol.
Concentration:	> 0.2 mg/ml
Note:	THIS PRODUCT IS FOR RESEARCH USE ONLY. NOT FOR USE IN DIAGNOSTIC, THERAPEUTIC OR COSMETIC PROCEDURES. NOT FOR HUMAN OR ANIMAL CONSUMPTION.