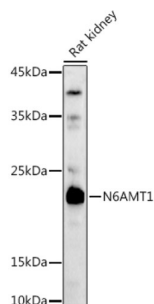
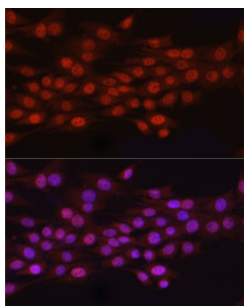


N-6-Adenine Specific DNA Methyltransferase 1 (N6AMT1) Antibody

Catalogue No.: abx005435



Western blot analysis of lysates from Rat kidney, using N6AMT1/HEMK2 Antibody at 1/1000 dilution. Secondary antibody: HRP-conjugated Goat anti-Rabbit IgG (H+L) at 1/10000 dilution. Lysates/proteins: 25 µg per lane. Blocking buffer: 3% nonfat dry milk in TBST. Exposure time: 90s.



Immunofluorescence analysis of PC-12 cells using N6AMT1/HEMK2 Antibody at dilution of 1/100 (40x lens). Secondary antibody: Cy3-conjugated Goat anti-Rabbit IgG (H+L) at 1/500 dilution. Blue: DAPI for nuclear staining.

N6AMT1 Antibody is a Rabbit Polyclonal antibody against N6AMT1. This gene encodes an N(6)-adenine-specific DNA methyltransferase. The encoded enzyme may be involved in the methylation of release factor I during translation termination. This enzyme is also involved in converting the arsenic metabolite monomethylarsonous acid to the less toxic dimethylarsonic acid. Alternative splicing of this gene results in multiple transcript variants. A related pseudogene has been identified on chromosome 11.

Target: N-6-Adenine Specific DNA Methyltransferase 1 (N6AMT1)

Clonality: Polyclonal

Reactivity: Human, Mouse, Rat

Tested Applications: ELISA, WB, IF/ICC

Host: Rabbit

Recommended dilutions: ELISA: 1 µg/ml, WB: 1/500 - 1/1000, IF/ICC: 1/50 - 1/200. Optimal dilutions/concentrations should be determined by the end user.

Conjugation: Unconjugated

Immunogen: A synthetic peptide corresponding to a sequence within amino acids 1-186 of human N6AMT1/HEMK2.

Isotype: IgG

Datasheet

Version: 6.0.0
Revision date: 11 Jun 2025



Form:	Liquid
Purification:	Purified by affinity chromatography.
Storage:	Aliquot and store at -20°C. Avoid repeated freeze/thaw cycles.
UniProt Primary AC:	Q9Y5N5 (UniProt , ExPASy)
Gene Symbol:	N6AMT1
GeneID:	29104
NCBI Accession:	NP_877426.3
String:	9606.ENSP00000303584
Molecular Weight:	Calculated MW: 23 kDa Observed MW: 23 kDa
Buffer:	PBS, pH 7.3, containing 0.05% Proclin-300, 50% glycerol.
Concentration:	0.88 mg/ml
Note:	THIS PRODUCT IS FOR RESEARCH USE ONLY. NOT FOR USE IN DIAGNOSTIC, THERAPEUTIC OR COSMETIC PROCEDURES. NOT FOR HUMAN OR ANIMAL CONSUMPTION.