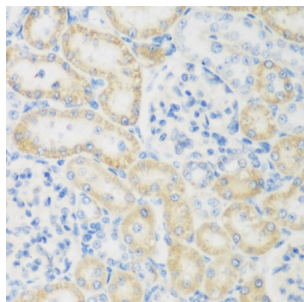
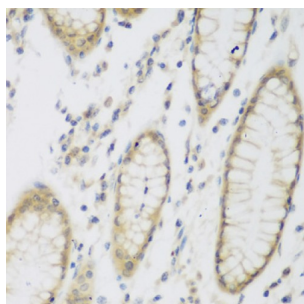


Putative N-Acetyltransferase 8B (NAT8B) Antibody

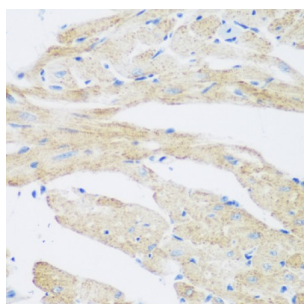
Catalogue No.: abx005437



Immunohistochemistry of paraffin-embedded Rat kidney using NAT8B Antibody (1/200 dilution, 40x lens).



Immunohistochemistry of paraffin-embedded Human stomach using NAT8B Antibody (1/200 dilution, 40x lens).



Immunohistochemistry of paraffin-embedded Mouse heart using NAT8B Antibody (1/200 dilution, 40x lens).

NAT8B Antibody is a Rabbit Polyclonal antibody against NAT8B. The protein encoded by this gene is highly similar to the N-acetyltransferase 8 (NAT8) gene product, which is a kidney and liver protein with homology to bacterial acetyltransferases involved in drug resistance. This gene is localized on chromosome 2 in the vicinity of the NAT8 gene and may represent a pseudogene of NAT8. This gene contains two polymorphic nonsense mutations that disrupt the active site of the protein. The full-length product of this gene contains a complete acetyltransferase domain and is identical in length to NAT8.

Target: Putative N-Acetyltransferase 8B (NAT8B)

Clonality: Polyclonal

Reactivity: Human, Mouse, Rat

Tested Applications: IHC

Host: Rabbit

Datasheet

Version: 5.0.0
Revision date: 13 Jul 2025



Recommended dilutions: IHC-P: 1/50 - 1/200. Not tested in IHC-F. Optimal dilutions/concentrations should be determined by the end user.

Conjugation: Unconjugated

Immunogen: Recombinant fusion protein corresponding to human NAT8B

Isotype: IgG

Form: Liquid

Purification: Purified by affinity chromatography.

Storage: Aliquot and store at -20°C. Avoid repeated freeze/thaw cycles.

UniProt Primary AC: Q9UHF3 ([UniProt](#), [ExPASy](#))

Gene Symbol: NAT8B

GenelD: [51471](#)

NCBI Accession: NP_057431.2

KEGG: hsa:51471

Buffer: PBS, pH 7.3, containing 0.02% sodium azide, 50% glycerol.

Concentration: 1 mg/ml

Note: THIS PRODUCT IS FOR RESEARCH USE ONLY. NOT FOR USE IN DIAGNOSTIC, THERAPEUTIC OR COSMETIC PROCEDURES. NOT FOR HUMAN OR ANIMAL CONSUMPTION.