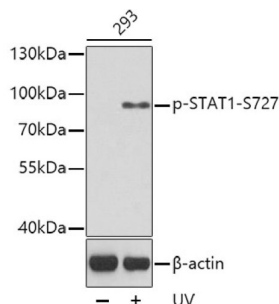
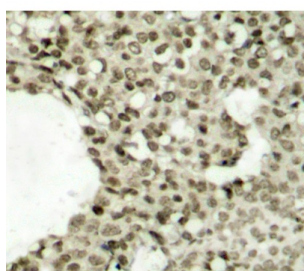


Signal Transducer And Activator of Transcription 1 Phospho-Ser727 (STAT1 pS727) Antibody

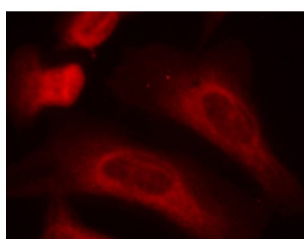
Catalogue No.: abx000500



Western blot analysis of lysates from 293 cells, using Phospho-STAT1-S727 Antibody. Secondary antibody: HRP-conjugated Goat anti-Rabbit IgG (H+L) at 1/10000 dilution. Lysates/proteins: 25 µg per lane. Blocking buffer: 3% BSA.



Immunohistochemistry analysis of paraffin-embedded Human breast carcinoma tissue, using Phospho-STAT1-S727 Antibody. Microwave antigen retrieval performed in 0.01 M Tris/EDTA Buffer (pH 9.0) prior to IHC staining.



Immunofluorescence analysis of methanol-fixed HeLa cells using Phospho-STAT1-S727 Antibody.

STAT1 (pS727) Antibody is a Rabbit Polyclonal antibody against STAT1 (pS727). The protein encoded by this gene is a member of the STAT protein family. In response to cytokines and growth factors, STAT family members are phosphorylated by the receptor associated kinases, and then form homo- or heterodimers that translocate to the cell nucleus where they act as transcription activators. This protein can be activated by various ligands including interferon-alpha, interferon-gamma, EGF, PDGF and IL6. This protein mediates the expression of a variety of genes, which is thought to be important for cell viability in response to different cell stimuli and pathogens. Two alternatively spliced transcript variants encoding distinct isoforms have been described.

Target: Signal Transducer And Activator of Transcription 1 Phospho-Ser727 (STAT1 pS727)

Clonality: Polyclonal

Reactivity: Human, Mouse, Rat

Tested Applications: ELISA, WB, IHC, IF/ICC

Datasheet

Version: 4.0.0
Revision date: 06 Mar 2025



Host:	Rabbit
Recommended dilutions:	ELISA: 1 µg/ml, WB: 1/500 - 1/2000, IHC-P: 1/50 - 1/100, IF/ICC: 1/100 - 1/200. Not tested in IHC-F. Optimal dilutions/concentrations should be determined by the end user.
Conjugation:	Unconjugated
Immunogen:	A synthetic phosphorylated peptide around S727 of human STAT1.
Isotype:	IgG
Form:	Liquid
Purification:	Purified by affinity chromatography.
Storage:	Aliquot and store at -20°C. Avoid repeated freeze/thaw cycles.
UniProt Primary AC:	P42224 (UniProt , ExPASy)
Gene Symbol:	STAT1
GeneID:	6772
NCBI Accession:	NP_009330.1
Molecular Weight:	Calculated MW: 87 kDa Observed MW: 87 kDa
Buffer:	PBS, pH 7.3, containing 0.05% Proclin-300, 50% glycerol.
Concentration:	> 0.2 mg/ml
Note:	THIS PRODUCT IS FOR RESEARCH USE ONLY. NOT FOR USE IN DIAGNOSTIC, THERAPEUTIC OR COSMETIC PROCEDURES. NOT FOR HUMAN OR ANIMAL CONSUMPTION.