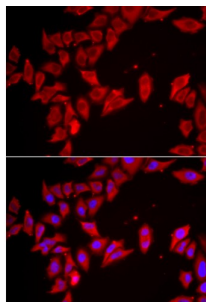


SLC35A2 Antibody

Catalogue No.: abx005460



Immunofluorescence analysis of HeLa cells using SLC35A2 Antibody

SLC35A2 Antibody is a Rabbit Polyclonal antibody against SLC35A2. This gene encodes a member of the nucleotide-sugar transporter family. The encoded protein is a multi-pass membrane protein. It transports UDP-galactose from the cytosol into Golgi vesicles, where it serves as a glycosyl donor for the generation of glycans. Mutations in this gene cause congenital disorder of glycosylation type II_m (CDG2M). Multiple alternatively spliced transcript variants encoding distinct isoforms have been found for this gene.

Target: SLC35A2

Clonality: Polyclonal

Reactivity: Human

Tested Applications: IF/ICC

Host: Rabbit

Recommended dilutions: IF/ICC: 1/50 - 1/200. Optimal dilutions/concentrations should be determined by the end user.

Conjugation: Unconjugated

Immunogen: Recombinant fusion protein corresponding to human SLC35A2

Isotype: IgG

Form: Liquid

Purification: Purified by affinity chromatography.

Storage: Aliquot and store at -20°C. Avoid repeated freeze/thaw cycles.

UniProt Primary AC: P78381 ([UniProt](#), [ExPASy](#))

Datasheet

Version: 3.0.0
Revision date: 05 Mar 2025



Gene Symbol: SLC35A2

GeneID: [7355](#)

NCBI Accession: NP_001027460.1

KEGG: hsa:7355

String: [9606.ENSP00000416002](#)

Buffer: PBS, pH 7.3, containing 0.02% sodium azide, 50% glycerol.

Concentration: 1 mg/ml

Note: THIS PRODUCT IS FOR RESEARCH USE ONLY. NOT FOR USE IN DIAGNOSTIC, THERAPEUTIC OR COSMETIC PROCEDURES. NOT FOR HUMAN OR ANIMAL CONSUMPTION.

For Reference Only