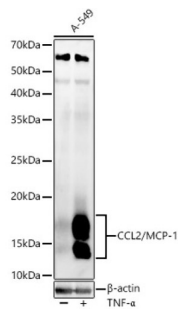
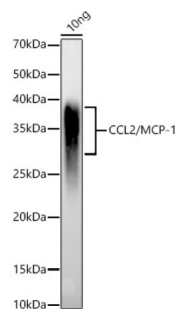


C-C Motif Chemokine 2 / MCP1 (CCL2) Antibody

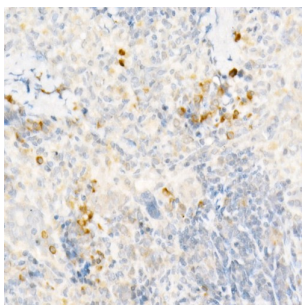
Catalogue No.: abx005484



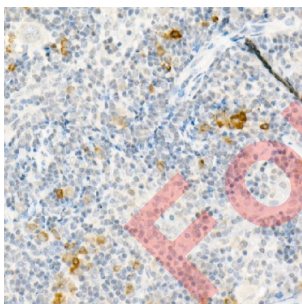
Western blot analysis of A-549 using CCL2/MCP-1 Antibody (1/2000 dilution). A-549 cells were treated by TNF- α (20 ng/ml) at 37°C for 30 minutes after serum-starvation overnight.



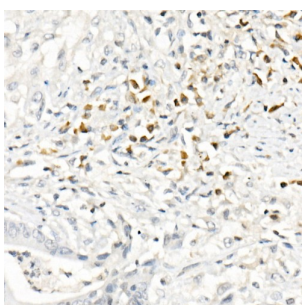
Western blot analysis of various lysates using CCL2/MCP-1 Antibody (1/2000 dilution).



Immunohistochemistry of paraffin-embedded Rat spleen using CCL2/MCP-1 antibody (1/50 dilution, 40x lens). High pressure antigen retrieval was performed in 10 mM citrate buffer pH 6.0 before commencing with IHC staining protocol.



Immunohistochemistry of paraffin-embedded Mouse spleen using CCL2/MCP-1 antibody (1/50 dilution, 40x lens). High pressure antigen retrieval was performed in 10 mM citrate buffer pH 6.0 before commencing with IHC staining protocol.



Immunohistochemistry of paraffin-embedded Human colon carcinoma using CCL2/MCP-1 antibody (1/50 dilution, 40x lens). High pressure antigen retrieval was performed in 10 mM citrate buffer pH 6.0 before commencing with IHC staining protocol.

Datasheet

Version: 3.0.0
Revision date: 19 Jun 2025



CCL2 Antibody is a Rabbit Polyclonal antibody against CCL2. This gene is one of several cytokine genes clustered on the q-arm of chromosome 17. Chemokines are a superfamily of secreted proteins involved in immunoregulatory and inflammatory processes. The superfamily is divided into four subfamilies based on the arrangement of N-terminal cysteine residues of the mature peptide. This chemokine is a member of the CC subfamily which is characterized by two adjacent cysteine residues. This cytokine displays chemotactic activity for monocytes and basophils but not for neutrophils or eosinophils. It has been implicated in the pathogenesis of diseases characterized by monocytic infiltrates, like psoriasis, rheumatoid arthritis and atherosclerosis. It binds to chemokine receptors CCR2 and CCR4.

Target:	C-C Motif Chemokine 2 / MCP1 (CCL2)
Clonality:	Polyclonal
Reactivity:	Human, Mouse, Rat
Tested Applications:	WB, IHC
Host:	Rabbit
Recommended dilutions:	WB: 1/500 - 1/2000, IHC-P: 1/50 - 1/200. Not tested in IHC-F. Optimal dilutions/concentrations should be determined by the end user.
Conjugation:	Unconjugated
Immunogen:	Recombinant fusion protein corresponding to human MCP-1
Isotype:	IgG
Form:	Liquid
Purification:	Purified by affinity chromatography.
Storage:	Aliquot and store at -20°C. Avoid repeated freeze/thaw cycles.
UniProt Primary AC:	P13500 (UniProt , ExPASy)
Gene Symbol:	CCL2
GeneID:	6347
OMIM:	158105
NCBI Accession:	NP_002973.1, NM_002982.3
HGNC:	10618
KEGG:	hsa:6347

Datasheet

Version: 3.0.0

Revision date: 19 Jun 2025



Ensembl: ENSG00000108691

String: [9606.ENSP00000225831](#)

Molecular Weight: Calculated MW: 11 kDa
Observed MW: 13-15 kDa

Buffer: PBS, pH 7.3, containing 0.05% Proclin-300, 50% glycerol.

Concentration: 1 mg/ml

Note: THIS PRODUCT IS FOR RESEARCH USE ONLY. NOT FOR USE IN DIAGNOSTIC, THERAPEUTIC OR COSMETIC PROCEDURES. NOT FOR HUMAN OR ANIMAL CONSUMPTION.

For Reference Only