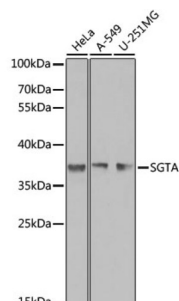
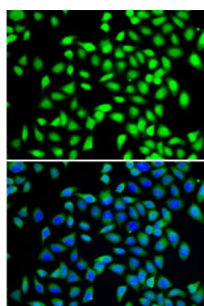


## Small Glutamine Rich Tetratricopeptide Repeat Containing Alpha (SGTA) Antibody

Catalogue No.: abx005513



Western blot analysis of extracts of various cell lines using SGTA Antibody (1/1000 dilution).



Immunofluorescence analysis of A-549 cells using SGTA Antibody Blue: DAPI for nuclear staining.

SGTA Antibody is a Rabbit Polyclonal antibody against SGTA. This gene encodes a protein which is capable of interacting with the major nonstructural protein of parvovirus H-1 and 70-kDa heat shock cognate protein; however, its function is not known. Since this transcript is expressed ubiquitously in various tissues, this protein may serve a housekeeping function.

**Target:** Small Glutamine Rich Tetratricopeptide Repeat Containing Alpha (SGTA)

**Clonality:** Polyclonal

**Reactivity:** Human

**Tested Applications:** WB, IF/ICC

**Host:** Rabbit

**Recommended dilutions:** WB: 1/500 - 1/2000, IF/ICC: 1/50 - 1/100. Optimal dilutions/concentrations should be determined by the end user.

**Conjugation:** Unconjugated

**Immunogen:** Recombinant fusion protein corresponding to human SGTA

**Isotype:** IgG

# Datasheet

Version: 5.0.0  
Revision date: 15 Sep 2025



<b>Form:</b>	Liquid
<b>Purification:</b>	Purified by affinity chromatography.
<b>Storage:</b>	Aliquot and store at -20°C. Avoid repeated freeze/thaw cycles.
<b>UniProt Primary AC:</b>	O43765 ( <a href="#">UniProt</a> , <a href="#">ExPASy</a> )
<b>Gene Symbol:</b>	SGTA
<b>GeneID:</b>	<a href="#">6449</a>
<b>NCBI Accession:</b>	NP_003012.1
<b>KEGG:</b>	hsa:6449
<b>String:</b>	<a href="#">9606.ENSP00000221566</a>
<b>Molecular Weight:</b>	Calculated MW: 34 kDa Observed MW: 38 kDa
<b>Buffer:</b>	PBS, pH 7.3, containing 0.02% sodium azide, 50% glycerol.
<b>Concentration:</b>	1 mg/ml
<b>Note:</b>	THIS PRODUCT IS FOR RESEARCH USE ONLY. NOT FOR USE IN DIAGNOSTIC, THERAPEUTIC OR COSMETIC PROCEDURES. NOT FOR HUMAN OR ANIMAL CONSUMPTION.