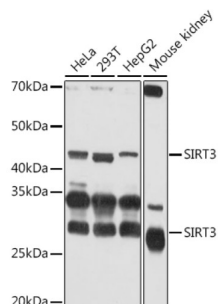
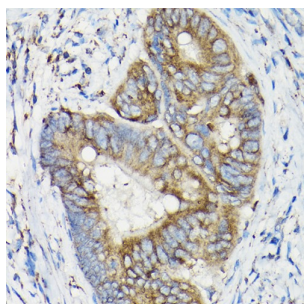


NAD-Dependent Protein Deacetylase Sirtuin-3, Mitochondrial (SIRT3) Antibody

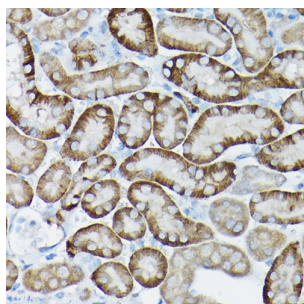
Catalogue No.: abx005514



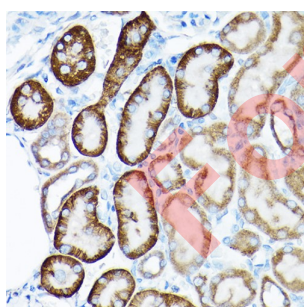
Immunohistochemistry analysis of paraffin-embedded Human colon carcinoma using SIRT3 Antibody at dilution of 1/50 (40x lens). High pressure antigen retrieval performed in 0.01 M Citrate buffer (pH 6.0) prior to IHC staining.



Immunohistochemistry analysis of paraffin-embedded Mouse kidney using SIRT3 Antibody at dilution of 1/50 (40x lens). High pressure antigen retrieval performed in 0.01 M Citrate buffer (pH 6.0) prior to IHC staining.



Immunohistochemistry analysis of paraffin-embedded Rat kidney using SIRT3 Antibody at dilution of 1/50 (40x lens). High pressure antigen retrieval performed in 0.01 M Citrate buffer (pH 6.0) prior to IHC staining.



Immunofluorescence analysis of NIH/3T3 cells using SIRT3 Antibody at dilution of 1/50 (40x lens). Secondary antibody: Cy3-conjugated Goat anti-Rabbit IgG (H+L) at 1/500 dilution. Blue: DAPI for nuclear staining.

SIRT3 Antibody is a Rabbit Polyclonal antibody against SIRT3. This gene encodes a member of the sirtuin family of proteins, homologs to the yeast Sir2 protein. Members of the sirtuin family are characterized by a sirtuin core domain and grouped into four classes. The functions of human sirtuins have not yet been determined; however, yeast sirtuin proteins are known to regulate epigenetic gene silencing and suppress recombination of rDNA. Studies suggest that the human sirtuins may function as intracellular regulatory proteins with mono-ADP-ribosyltransferase activity. The protein encoded by this gene is included in class I of the sirtuin family. Two alternatively spliced transcript variants that encode different proteins have been described for this gene.

Datasheet

Version: 6.0.0
Revision date: 02 Sep 2025



| | |
|-------------------------------|--|
| Target: | NAD-Dependent Protein Deacetylase Sirtuin-3, Mitochondrial (SIRT3) |
| Research Area: | Signal Transduction |
| Clonality: | Polyclonal |
| Reactivity: | Human, Mouse, Rat |
| Tested Applications: | ELISA, WB, IHC, IF/ICC, IP |
| Host: | Rabbit |
| Recommended dilutions: | ELISA: 1 µg/ml, WB: 1/500 - 1/1000, IHC-P: 1/50 - 1/200, IF/ICC: 1/50 - 1/200, IP: 0.5 µg - 4 µg antibody per 200 µg - 400 µg extracts of whole cells. Not tested in IHC-F. Optimal dilutions/concentrations should be determined by the end user. |
| Conjugation: | Unconjugated |
| Immunogen: | Synthetic peptide corresponding to SIRT3. The exact sequence is proprietary. |
| Isotype: | IgG |
| Form: | Liquid |
| Purification: | Purified by affinity chromatography. |
| Storage: | Aliquot and store at -20°C. Avoid repeated freeze/thaw cycles. |
| UniProt Primary AC: | Q9NTG7 (UniProt , ExPASy) |
| Gene Symbol: | SIRT3 |
| GeneID: | 23410 |
| NCBI Accession: | NP_036371.1 |
| String: | 9606.ENSP00000372191 |
| Molecular Weight: | Calculated MW: 44 kDa Observed MW: 28/44 kDa |
| Buffer: | PBS, pH 7.3, containing 0.09% sodium azide, 50% glycerol. |
| Concentration: | > 0.2 mg/ml |

Datasheet

Version: 6.0.0

Revision date: 02 Sep 2025



Note:

THIS PRODUCT IS FOR RESEARCH USE ONLY. NOT FOR USE IN DIAGNOSTIC, THERAPEUTIC OR COSMETIC PROCEDURES. NOT FOR HUMAN OR ANIMAL CONSUMPTION.

For Reference Only