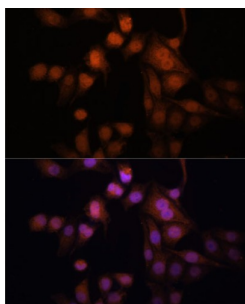
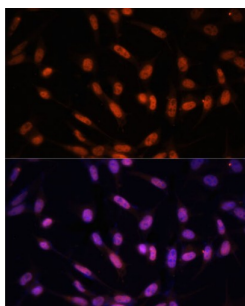


Twist-Related Protein 1 (TWIST1) Antibody

Catalogue No.: abx005521



Immunofluorescence analysis of HeLa cells using Twist Antibody (1/100 dilution). Blue: DAPI for nuclear staining.



Immunofluorescence analysis of NIH/3T3 cells using Twist Antibody (1/100 dilution). Blue: DAPI for nuclear staining.

TWIST1 Antibody is a Rabbit Polyclonal antibody against TWIST1. Basic helix-loop-helix (bHLH) transcription factors have been implicated in cell lineage determination and differentiation. The protein encoded by this gene is a bHLH transcription factor and shares similarity with another bHLH transcription factor, Dermo1. The strongest expression of this mRNA is in placental tissue; in adults, mesodermally derived tissues express this mRNA preferentially. Mutations in this gene have been found in patients with Saethre-Chotzen syndrome.

Target: Twist-Related Protein 1 (TWIST1)

Clonality: Polyclonal

Reactivity: Human, Mouse

Tested Applications: IF/ICC

Host: Rabbit

Recommended dilutions: IF/ICC: 1/50 - 1/100. Optimal dilutions/concentrations should be determined by the end user.

Conjugation: Unconjugated

Immunogen: Recombinant fusion protein corresponding to human Twist

Isotype: IgG

Datasheet

Version: 5.0.0
Revision date: 28 Aug 2025



Form:	Liquid
Purification:	Purified by affinity chromatography.
Storage:	Aliquot and store at -20°C. Avoid repeated freeze/thaw cycles.
UniProt Primary AC:	Q15672 (UniProt , ExPASy)
Gene Symbol:	TWIST1
GeneID:	7291
NCBI Accession:	NP_000465.1
KEGG:	hsa:7291
String:	9606.ENSP00000242261
Buffer:	PBS, pH 7.3, containing 0.02% sodium azide, 50% glycerol.
Concentration:	1 mg/ml
Note:	THIS PRODUCT IS FOR RESEARCH USE ONLY. NOT FOR USE IN DIAGNOSTIC, THERAPEUTIC OR COSMETIC PROCEDURES. NOT FOR HUMAN OR ANIMAL CONSUMPTION.