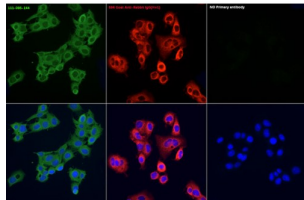
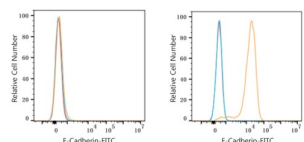


Goat Anti-Rabbit IgG H&L Antibody (FITC)

Catalogue No.: abx005545



Immunofluorescence analysis of HepG2 cells, using FITC Goat Anti-Rabbit IgG (H+L) as the primary antibody at dilution of 1/100. Secondary antibody: FITC Goat Anti-Rabbit IgG (H+L). Blue: DAPI for nuclear staining.



Flow cytometry: 1×10^6 K-562 cells (negative control, left) and A-431 cells (right) were surface-stained with Purified Rabbit anti-Human E-Cadherin antibody (5 μ l/Test, orange line) or secondary antibody only (blue line). Non-fluorescently stained K-562 and A-431 cells were used as blank control (red line). FITC Goat Anti-Rabbit IgG (H+L) (1/200) was used as a secondary antibody.

Goat Anti-Rabbit IgG (H+L) Antibody (FITC) is a Goat antibody against Rabbit IgG (H+L). This product is for research use only, not for diagnostic or therapeutic use.

Target: Rabbit IgG H&L

Clonality: Polyclonal

Reactivity: Rabbit

Tested Applications: IF/ICC, FCM

Host: Goat

Recommended dilutions: IF/ICC: 1/50 - 1/200, FCM: 1/50 - 1/200. Optimal dilutions/concentrations should be determined by the end user.

Conjugation: FITC

Excitation/Emission: 499/515

Laser Line: 488

Immunogen: Rabbit IgG

Datasheet

Version: 4.0.0

Revision date: 23 Jun 2025



Isotype:	IgG
Form:	Liquid
Purification:	Purified by affinity chromatography.
Storage:	Aliquot and store at -20°C. Avoid repeated freeze/thaw cycles.
Buffer:	PBS, pH 7.3, containing 0.025% sodium azide, 0.75% BSA, 50% glycerol.
Concentration:	1.23 mg/ml
Note:	THIS PRODUCT IS FOR RESEARCH USE ONLY. NOT FOR USE IN DIAGNOSTIC, THERAPEUTIC OR COSMETIC PROCEDURES. NOT FOR HUMAN OR ANIMAL CONSUMPTION.

For Reference Only