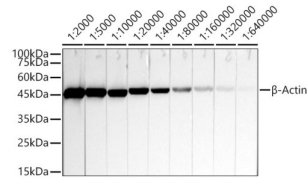
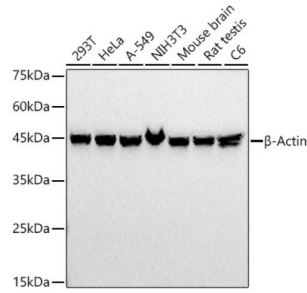


Actin, Cytoplasmic 1 (ACTB) Antibody

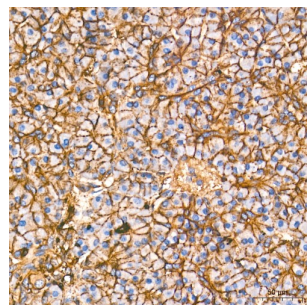
Catalogue No.:abx005571



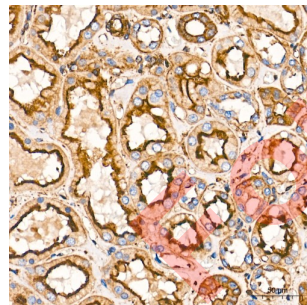
WB analysis of HeLa cell lysate (25 µg per lane), using serial dilutions (1/2000-1/640000) of ACTB antibody and [abx005537](#) - Goat Anti-Mouse IgG H&L Antibody conjugated to HRP (1/10000 dilution).



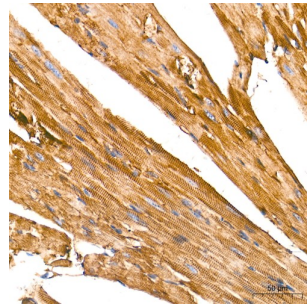
WB analysis of various cell and tissue lysates (25 µg per lane), using ACTB antibody (1/20000 dilution) and [abx005537](#) - Goat Anti-Mouse IgG H&L Antibody conjugated to HRP (1/10000 dilution).



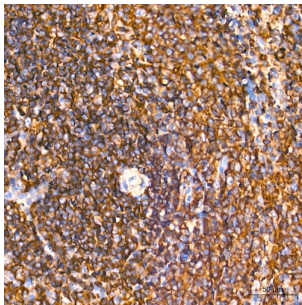
IHC-P analysis of Human pancreas tissue, using ACTB antibody (1/6000 dilution, 40x lens).



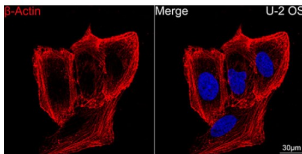
IHC-P analysis of Human kidney tissue, using ACTB antibody (1/6000 dilution, 40x lens).



IHC-P analysis of Mouse heart tissue, using ACTB antibody (1/6000 dilution, 40x lens).



IHC-P analysis of Rat spleen tissue, using ACTB antibody (1/6000 dilution, 40x lens).



IF analysis of U-2 OS cells, using ACTB antibody (1/200 dilution) followed by [abx005542](#) - Goat Anti-Mouse IgG H&L Antibody conjugated to Cyanine 3 (red). DAPI was used as a nuclear stain (blue). Lens: 100x.

Actin, Cytoplasmic 1 (ACTB) Antibody is a Mouse Monoclonal antibody against Actin, Cytoplasmic 1 (ACTB).

The ACTB gene encodes one of six different actin proteins. Actins are highly conserved proteins that are involved in cell motility, structure, integrity, and intercellular signaling. The encoded protein is a major constituent of the contractile apparatus and one of the two non-muscle cytoskeletal actins that are ubiquitously expressed. Mutations in this gene cause Baraitser-Winter syndrome 1, which is characterized by intellectual disability with a distinctive facial appearance in Human patients. Numerous pseudogenes of this gene have been identified throughout the human genome.

Target: Actin, Cytoplasmic 1 (ACTB)

Research Area: Signal Transduction, Developmental Science, Bone Metabolism

Clonality: Monoclonal

Clone: C344

Reactivity: Human, Mouse, Rat

Tested Applications: ELISA, WB, IHC, IF/ICC

Host: Mouse

Recommended dilutions: ELISA: 1 µg/ml, WB: 1/5000 - 1/160000, IHC-P: 1/1000-1/10000, IF/ICC: 1/50 - 1/200. Not tested in IHC-F. Optimal dilutions/concentrations should be determined by the end user.

Conjugation: Unconjugated

Datasheet

Version: 7.0.0
Revision date: 09 Jul 2025



Immunogen:	Recombinant protein corresponding to Human Actin, Cytoplasmic 1 (ACTB). The exact sequence is proprietary.
Isotype:	IgG ₁ Kappa
Form:	Liquid
Purification:	Purified by affinity chromatography.
Storage:	Aliquot and store at -20°C. Avoid repeated freeze/thaw cycles.
UniProt Primary AC:	P60709 (UniProt , ExPASy)
GeneID:	60
KEGG:	hsa:60
String:	9606.ENSP00000349960
Molecular Weight:	Calculated MW: 42 kDa Observed MW: 42 kDa
Buffer:	PBS, pH 7.3, containing 0.05% Proclin-300, 50% glycerol.
Concentration:	1.10 mg/ml
Note:	THIS PRODUCT IS FOR RESEARCH USE ONLY. NOT FOR USE IN DIAGNOSTIC, THERAPEUTIC OR COSMETIC PROCEDURES. NOT FOR HUMAN OR ANIMAL CONSUMPTION.