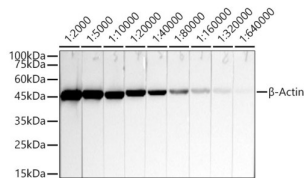
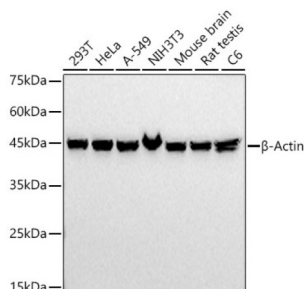


## Beta Actin (ACTB) Antibody

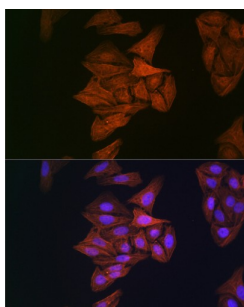
Catalogue No.: abx005571



Western blot analysis of lysates from HeLa cells, using  $\beta$ -Actin Mouse antibody at 1/2000-1/640000 dilution. Secondary antibody: HRP-conjugated Goat anti-Mouse IgG (H+L) at 1/10000 dilution. Lysates/proteins: 25  $\mu$ g per lane. Blocking buffer: 3% nonfat dry milk in TBST. Exposure time: 10s.



Western blot analysis of various lysates, using  $\beta$ -Actin Mouse antibody at 1/20000 dilution. Secondary antibody: HRP-conjugated Goat anti-Mouse IgG (H+L) at 1/10000 dilution. Lysates/proteins: 25  $\mu$ g per lane. Blocking buffer: 3% nonfat dry milk in TBST. Exposure time: 1s.



Immunohistochemistry analysis of paraffin-embedded Human colon tissue using  $\beta$ -Actin Mouse antibody at a dilution of 1/200 (40x lens). High pressure antigen retrieval performed in 0.01 M Citrate buffer (pH 6.0) prior to IHC staining.

Beta actin Antibody is a Mouse Monoclonal antibody against Bet actin. Beta Actin, also named as ACTB and F-Actin, belongs to the actin family. Actins are highly conserved globular proteins that are involved in various types of cell motility and are ubiquitously expressed in all eukaryotic cells. At least six isoforms of actins are known in mammals and other vertebrates: alpha (ACTC1, cardiac muscle 1), alpha 1 (ACTA1, skeletal muscle) and 2 (ACTA2, aortic smooth muscle), beta (ACTB), gamma 1 (ACTG1) and 2 (ACTG2, enteric smooth muscle). Beta and gamma 1 are two non-muscle actin proteins. Most actins consist of 376aa, while ACTG2 (rich in muscles) has 375aa and ACTG1(found in non-muscle cells) has only 374aa. Beta Actin has been widely used as the internal control in RT-PCR and Western Blotting as a 42-kDa protein. This antibody was generated by full length beta actin protein and can cross-react with other actins.

**Target:** Beta Actin (ACTB)

**Clonality:** Monoclonal

**Clone:** C344

**Reactivity:** Human, Mouse, Rat

# Datasheet

Version: 6.0.0  
Revision date: 19 Mar 2025



**Tested Applications:** ELISA, WB, IHC, IF/ICC

**Host:** Mouse

**Recommended dilutions:** ELISA: 1 µg/ml, WB: 1/5000 - 1/160000, IHC-P: 1/50 - 1/200, IF/ICC: 1/50 - 1/200. Not tested in IHC-F. Optimal dilutions/concentrations should be determined by the end user.

**Conjugation:** Unconjugated

**Immunogen:** Fusion protein of human  $\beta$ -Actin

**Isotype:** IgG, Kappa

**Form:** Liquid

**Purification:** Purified by affinity chromatography.

**Storage:** Aliquot and store at -20°C. Avoid repeated freeze/thaw cycles.

**UniProt Primary AC:** P60709 ([UniProt](#), [ExPASy](#))

**GeneID:** [60](#)

**KEGG:** hsa:60

**String:** [9606.ENSP00000349960](#)

**Molecular Weight:** Calculated MW: 42 kDa  
Observed MW: 42 kDa

**Buffer:** PBS, pH 7.3, containing 0.05% Proclin-300, 50% glycerol.

**Concentration:** 1.15 mg/ml

**Note:** THIS PRODUCT IS FOR RESEARCH USE ONLY. NOT FOR USE IN DIAGNOSTIC, THERAPEUTIC OR COSMETIC PROCEDURES. NOT FOR HUMAN OR ANIMAL CONSUMPTION.