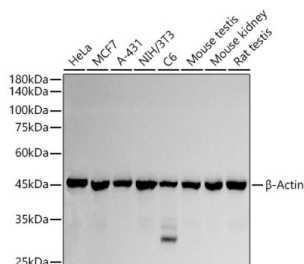


## Beta Actin (ACTB) Antibody

Catalogue No.: abx005572



Western blot analysis of various lysates using  $\beta$ -Actin Antibody at 1/1000 dilution. Secondary antibody: HRP-conjugated Goat anti-Rabbit IgG (H+L) at 1/10000 dilution. Lysates/proteins: 25  $\mu$ g per lane. Blocking buffer: 3% nonfat dry milk in TBST. Exposure time: 1s.

$\beta$ -actin Antibody is a Rabbit Polyclonal antibody against  $\beta$ -actin. Beta Actin, also named as ACTB and F-Actin, belongs to the actin family. Actins are highly conserved globular proteins that are involved in various types of cell motility and are ubiquitously expressed in all eukaryotic cells. At least six isoforms of actins are known in mammals and other vertebrates: alpha (ACTC1, cardiac muscle 1), alpha 1 (ACTA1, skeletal muscle) and 2 (ACTA2, aortic smooth muscle), beta (ACTB), gamma 1 (ACTG1) and 2 (ACTG2, enteric smooth muscle). Beta and gamma 1 are two non-muscle actin proteins. Most actins consist of 376aa, while ACTG2 (rich in muscles) has 375aa and ACTG1 (found in non-muscle cells) has only 374aa. Beta Actin has been widely used as the internal control in RT-PCR and Western Blotting as a 42-kDa protein. This antibody was generated by full length beta actin protein and can cross-react with other actins.

**Target:** Beta Actin (ACTB)

**Clonality:** Polyclonal

**Reactivity:** Human, Mouse, Rat

**Tested Applications:** WB

**Host:** Rabbit

**Recommended dilutions:** WB: 1/500 - 1/1000. Optimal dilutions/concentrations should be determined by the end user.

**Conjugation:** Unconjugated

**Immunogen:** Recombinant fusion protein containing a sequence corresponding to amino acids 1-375 of Human  $\beta$ -Actin.

**Isotype:** IgG

**Form:** Liquid

**Purification:** Purified by affinity chromatography.

**Storage:** Aliquot and store at -20°C. Avoid repeated freeze/thaw cycles.

# Datasheet

Version: 5.0.0  
Revision date: 13 Mar 2025



**UniProt Primary AC:** P60709 ([UniProt](#), [ExPASy](#))

**GeneID:** [60](#)

**NCBI Accession:** NP\_001092.1

**KEGG:** hsa:60

**String:** [9606.ENSP00000349960](#)

**Molecular Weight:** Calculated MW: 42 kDa  
Observed MW: 42 kDa

**Buffer:** PBS, pH 7.3, containing 0.05% Proclin-300, 50% glycerol.

**Concentration:** 1.07 mg/ml

**Note:** THIS PRODUCT IS FOR RESEARCH USE ONLY. NOT FOR USE IN DIAGNOSTIC, THERAPEUTIC OR COSMETIC PROCEDURES. NOT FOR HUMAN OR ANIMAL CONSUMPTION.

For Reference Only