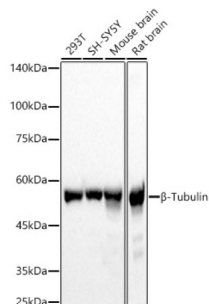
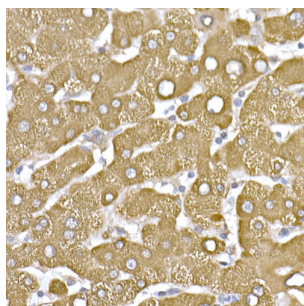


## Tubulin Beta (TUBB) Antibody

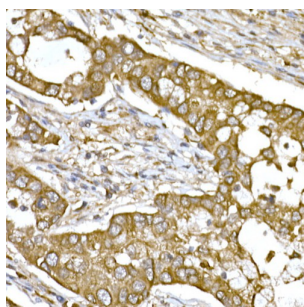
Catalogue No.: abx005574



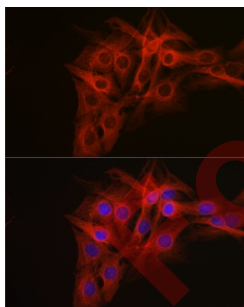
Western blot analysis of various lysates, using  $\beta$ -Tubulin Antibody at 1/2000 dilution. Secondary antibody: HRP-conjugated Goat anti-Rabbit IgG (H+L) at 1/10000 dilution. Lysates/proteins: 25  $\mu$ g per lane. Blocking buffer: 3% nonfat dry milk in TBST. Exposure time: 1s.



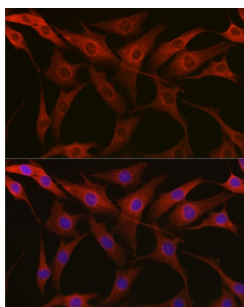
Immunohistochemistry analysis of paraffin-embedded Human liver using  $\beta$ -Tubulin Antibody at dilution of 1/200 (40x lens). High pressure antigen retrieval performed in 0.01 M Citrate buffer (pH 6.0) prior to IHC staining.



Immunohistochemistry analysis of paraffin-embedded Human lung cancer using  $\beta$ -Tubulin Antibody at dilution of 1/200 (40x lens). High pressure antigen retrieval performed in 0.01 M Citrate buffer (pH 6.0) prior to IHC staining.



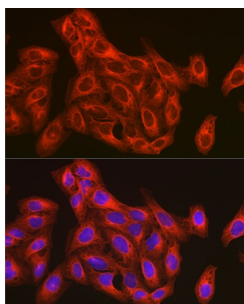
Immunofluorescence analysis of C6 cells using  $\beta$ -Tubulin Antibody at dilution of 1/100 (40x lens). Secondary antibody: Cy3-conjugated Goat anti-Rabbit IgG (H+L) at 1/500 dilution. Blue: DAPI for nuclear staining.



Immunofluorescence analysis of NIH-3T3 cells using  $\beta$ -Tubulin Antibody at dilution of 1/100 (40x lens). Secondary antibody: Cy3-conjugated Goat anti-Rabbit IgG (H+L) at 1/500 dilution. Blue: DAPI for nuclear staining.

# Datasheet

Version: 4.0.0  
Revision date: 27 Aug 2025



Immunofluorescence analysis of U-2 OS cells using  $\beta$ -Tubulin Antibody at dilution of 1/100 (40x lens). Secondary antibody: Cy3-conjugated Goat anti-Rabbit IgG (H+L) at 1/500 dilution. Blue: DAPI for nuclear staining.

$\beta$ -Tubulin Antibody is a Rabbit Polyclonal antibody against  $\beta$ -Tubulin. There are five tubulins in human cells: alpha, beta, gamma, delta, and epsilon. Tubulins are conserved across species. They form heterodimers, which multimerize to form a microtubule filament. An alpha and Tubulin Beta heterodimer is the basic structural unit of microtubules. The heterodimer does not come apart, once formed. The alpha and Tubulin Betas, which are each about 55 kDa MW, are homologous but not identical. Alpha, beta, and gamma tubulins have all been used as loading controls. Tubulin expression may vary according to resistance to antimicrobial and antimitotic drugs.

Target:	Tubulin Beta (TUBB)
Clonality:	Polyclonal
Reactivity:	Human, Mouse, Rat
Tested Applications:	WB, IHC, IF/ICC
Host:	Rabbit
Recommended dilutions:	WB: 1/500 - 1/1000, IHC-P: 1/50 - 1/200, IF/ICC: 1/50 - 1/200. Not tested in IHC-F. Optimal dilutions/concentrations should be determined by the end user.
Conjugation:	Unconjugated
Immunogen:	Recombinant fusion protein containing a sequence corresponding to amino acids 40-260 of human $\beta$ -Tubulin.
Isotype:	IgG
Form:	Liquid
Purification:	Purified by affinity chromatography.
Storage:	Aliquot and store at -20°C. Avoid repeated freeze/thaw cycles.
UniProt Primary AC:	Q13509 ( <a href="#">UniProt</a> , <a href="#">ExPASy</a> )
GeneID:	<a href="#">10381</a>

# Datasheet

Version: 4.0.0

Revision date: 27 Aug 2025



**NCBI Accession:** NP\_006077.2

**KEGG:** hsa:10381

**String:** [9606.ENSP00000320295](#)

**Molecular Weight:** Calculated MW: 50 kDa  
Observed MW: 55 kDa

**Buffer:** PBS, pH 7.3, containing 0.05% Proclin-300, 50% glycerol.

**Concentration:** > 0.2 mg/ml

**Note:** THIS PRODUCT IS FOR RESEARCH USE ONLY. NOT FOR USE IN DIAGNOSTIC, THERAPEUTIC OR COSMETIC PROCEDURES. NOT FOR HUMAN OR ANIMAL CONSUMPTION.

For Reference Only