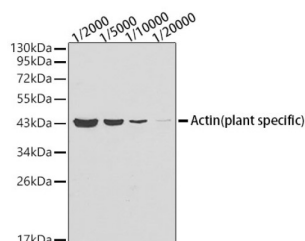
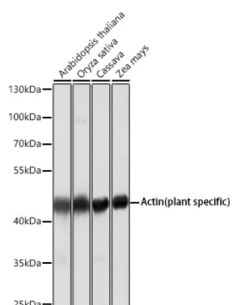


Plant actin Antibody

Catalogue No.: abx005575



Western blot analysis of lysates from *Arabidopsis thaliana* tissue using Actin (plant specific) Mouse antibody. Secondary antibody: HRP-conjugated Goat anti-Mouse IgG (H+L) at 1/10000 dilution. Lysates/proteins: 25 µg per lane. Blocking buffer: 3% nonfat dry milk in TBST.



Western blot analysis of extracts of various tissues from *Arabidopsis thaliana*, using Actin (plant specific) Mouse antibody at 1/5000 dilution. Secondary antibody: HRP-conjugated Goat anti-Mouse IgG (H+L) at 1/10000 dilution. Lysates/proteins: 25 µg per lane. Blocking buffer: 3% nonfat dry milk in TBST. Exposure time: 30s.

Plant actin Antibody is a Mouse Monoclonal antibody against Plant actin. Actins are highly conserved proteins that are involved in various types of cell motility and are ubiquitously expressed in all eukaryotic cells. As an essential component of cell cytoskeleton, actin plays an important role in cytoplasmic streaming, cell shape determination, cell division, organelle movement and extension growth. In Plant, actin preferentially expressed in young and expanding tissues, floral organ primordia, developing seeds, and emerging inflorescence. It displays a very high expression level in mature pollen and pollen tubes.

Target:	Plant actin
Clonality:	Monoclonal
Reactivity:	Plant
Tested Applications:	ELISA, WB
Host:	Mouse

Recommended dilutions: ELISA: 1 µg/ml, WB: 1/2000 - 1/5000. Optimal dilutions/concentrations should be determined by the end user.

Conjugation: Unconjugated

Immunogen: A synthetic peptide corresponding to Actin (plant specific).

Isotype: IgG₁

Datasheet

Version: 4.0.0

Revision date: 03 Jun 2025



Form:	Liquid
Purification:	Purified by affinity chromatography.
Storage:	Aliquot and store at -20°C. Avoid repeated freeze/thaw cycles.
Molecular Weight:	Calculated MW: 45 kDa Observed MW: 45 kDa
Buffer:	PBS, pH 7.3, containing 0.02% sodium azide, 1% BSA, 50% glycerol.
Concentration:	> 0.2 mg/ml
Note:	THIS PRODUCT IS FOR RESEARCH USE ONLY. NOT FOR USE IN DIAGNOSTIC, THERAPEUTIC OR COSMETIC PROCEDURES. NOT FOR HUMAN OR ANIMAL CONSUMPTION.

For Reference Only