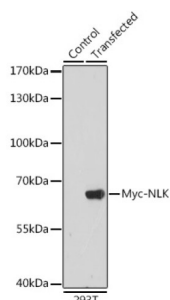
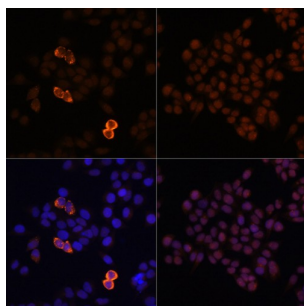


Myc-Tag Antibody

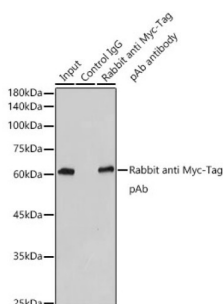
Catalogue No.: abx005582



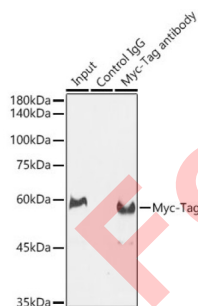
Western blot analysis of extracts of normal 293T cells and 293T transfected with Myc-NLK protein, using Rabbit anti Myc-Tag antibody at 1/5000 dilution. Secondary antibody: HRP-conjugated Goat anti-Rabbit IgG (H+L) at 1/10000 dilution. Lysates/proteins: 25 µg per lane. Blocking buffer: 3% nonfat dry milk in TBST. Exposure time: 10s.



Immunofluorescence analysis of HeLa-Myc-C and HeLa cells using Rabbit anti Myc-Tag antibody at dilution of 1/100 (40x lens). Secondary antibody: Cy3-conjugated Goat anti-Rabbit IgG (H+L) at 1/500 dilution. Blue: DAPI for nuclear staining.



Immunoprecipitation analysis of 300 µg extracts of 293T cells using 3 µg Rabbit anti Myc-Tag antibody. Western blot was performed from the immunoprecipitate using Rabbit anti Myc-Tag antibody at a dilution of 1/50000.



Immunoprecipitation analysis of 300 µg extracts of 293T-NLK-Myc cells using 3 µg Myc-Tag antibody. Western blot was performed from the immunoprecipitate using Myc-Tag antibody at a dilution of 1/20000.

Myc-Tag Antibody is a Rabbit Polyclonal antibody against Myc-Tag. Protein tags are protein or peptide sequences located either on the C- or N- terminal of the target protein, which facilitates one or several of the following characteristics: solubility, detection, purification, localization and expression. The c-Myc tag corresponds to amino acid residues(EQKLISEEDL) of the human c-Myc protein. It can be used for affinity chromatography, then used to separate recombinant, overexpressed protein from wild type protein expressed by the host organism. It can also be used in the isolation of protein complexes with multiple subunits. Myc-Tag mouse mAb detects recombinant proteins containing the Myc tag. The antibody recognizes the Myc-tag EQKLISEEDL fused to either the amino- or carboxy- terminus of targeted proteins.

Datasheet

Version: 2.0.0

Revision date: 28 May 2025



Target:	Myc-Tag
Clonality:	Polyclonal
Reactivity:	General
Tested Applications:	WB, IF/ICC, IP
Host:	Rabbit
Recommended dilutions:	WB: 1/2000 - 1/6000, IF/ICC: 1/50 - 1/200, IP: 0.5 µg - 4 µg antibody per 200 µg - 400 µg extracts of whole cells. Optimal dilutions/concentrations should be determined by the end user.
Conjugation:	Unconjugated
Immunogen:	A synthetic peptide corresponding to Myc tag.
Isotype:	IgG
Form:	Liquid
Purification:	Purified by affinity chromatography.
Storage:	Aliquot and store at -20°C. Avoid repeated freeze/thaw cycles.
Buffer:	PBS, pH 7.3, containing 0.05% Proclin-300, 50% glycerol.
Concentration:	> 0.2 mg/ml
Note:	THIS PRODUCT IS FOR RESEARCH USE ONLY. NOT FOR USE IN DIAGNOSTIC, THERAPEUTIC OR COSMETIC PROCEDURES. NOT FOR HUMAN OR ANIMAL CONSUMPTION.