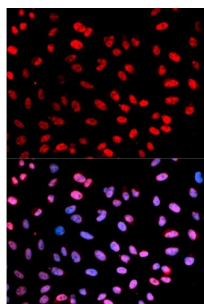


## ESPL1 (pS1126) Antibody

Catalogue No.: abx000516



Immunofluorescence analysis of U2OS cells using Phospho-ESPL1-S1126 antibody (abx000516). Blue: DAPI for nuclear staining.

ESPL1 (pS1126) Antibody is a Rabbit Polyclonal antibody against ESPL1 (pS1126). Stable cohesion between sister chromatids before anaphase and their timely separation during anaphase are critical for chromosome inheritance. In vertebrates, sister chromatid cohesion is released in 2 steps via distinct mechanisms. The first step involves phosphorylation of STAG1 (MIM 604358) or STAG2 (MIM 300826) in the cohesin complex. The second step involves cleavage of the cohesin subunit SCC1 (RAD21; MIM 606462) by ESPL1, or separase, which initiates the final separation of sister chromatids.

**Target:** ESPL1 (pS1126)

**Clonality:** Polyclonal

**Reactivity:** Human

**Tested Applications:** WB

**Host:** Rabbit

**Recommended dilutions:** WB: 1/500 - 1/2000. Optimal dilutions/concentrations should be determined by the end user.

**Conjugation:** Unconjugated

**Immunogen:** A synthetic phosphorylated peptide around S1126 of human ESPL1.

**Isotype:** IgG

**Form:** Liquid

**Purification:** Purified by affinity chromatography.

**Storage:** Aliquot and store at -20°C. Avoid repeated freeze/thaw cycles.

**UniProt Primary AC:** Q14674 ([UniProt](#), [ExPASy](#))

# Datasheet

Version: 2.0.0

Revision date: 06 Jun 2024



**Gene Symbol:** ESPL1

**GeneID:** [9700](#)

**NCBI Accession:** NP\_036423.4

**KEGG:** hsa:9700

**String:** [9606.ENSP00000257934](#)

**Molecular Weight:** Calculated MW: 233 kDa

**Buffer:** PBS, pH 7.3, containing 0.02% sodium azide, 50% glycerol.

**Concentration:** > 0.2 mg/ml

**Note:** This product is for research use only.

For Reference Only