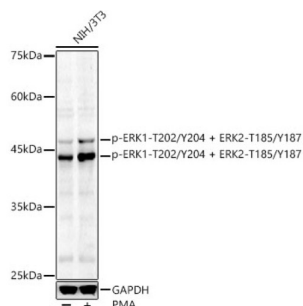
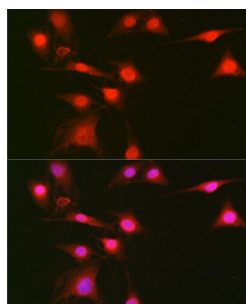


Mitogen-Activated Protein Kinase 1 Phospho-Thr185/Tyr187 and 3 Phospho-Thr202/Tyr204 (MAPK1 pT185/Y187/MAPK3 pT202/Y204) Antibody

Catalogue No.: abx000517



Western blot analysis of lysates from NIH/3T3 cells using Phospho-ERK1-T202/Y204 + ERK2-T185/Y187 Antibody at 1/1000 dilution. NIH/3T3 cells were treated by PMA/TPA (200 nM) at 37 °C for 30 minutes after serum-starvation overnight. Secondary antibody: HRP-conjugated Goat anti-Rabbit IgG (H+L) at 1/10000 dilution. Lysates/proteins: 25 µg per lane. Blocking buffer: 3% nonfat dry milk in TBST. Exposure time: 180s.



Western blot analysis of lysates from C6 cells using Phospho-ERK1-T202/Y204 + ERK2-T185/Y187 Antibody at 1/1000 dilution incubated overnight at 4 °C. C6 cells were treated by PMA(200 nM) at 37 °C for 10 minutes after serum-starvation overnight. Secondary antibody: HRP-conjugated Goat anti-Rabbit IgG (H+L) at 1/10000 dilution. Lysates/proteins: 30 µg per lane. Blocking buffer: 3 % nonfat dry milk in TBST. Detection: ECL Basic Kit (RM00020). Exposure time: 45s.

Erk1 (pT202/Y204) / Erk2 (pT185/Y187) Antibody is a Rabbit Polyclonal antibody against Erk1 (pT202/Y204) / Erk2 (pT185/Y187). The protein encoded by this gene is a member of the MAP kinase family. MAP kinases, also known as extracellular signal-regulated kinases (ERKs), act as an integration point for multiple biochemical signals, and are involved in a wide variety of cellular processes such as proliferation, differentiation, transcription regulation and development. The activation of this kinase requires its phosphorylation by upstream kinases. Upon activation, this kinase translocates to the nucleus of the stimulated cells, where it phosphorylates nuclear targets. Two alternatively spliced transcript variants encoding the same protein, but differing in the UTRs, have been reported for this gene.

Target: Mitogen-Activated Protein Kinase 1 Phospho-Thr185/Tyr187 and 3 Phospho-Thr202/Tyr204 (MAPK1 pT185/Y187 / MAPK3 pT202/Y204)

Clonality: Polyclonal

Reactivity: Human, Mouse, Rat

Tested Applications: ELISA, WB, IF/ICC

Host: Rabbit

Recommended dilutions: ELISA: 1 µg/ml, WB: 1/500 - 1/1000, IF/ICC: 1/50 - 1/200. Optimal dilutions/concentrations should be determined by the end user.

Conjugation: Unconjugated

Datasheet

Version: 6.0.0
Revision date: 07 Jun 2025



Immunogen:	A synthetic phosphorylated peptide around T185 & Y187 of human ERK2MAPK1.
Isotype:	IgG
Form:	Liquid
Purification:	Purified by affinity chromatography.
Storage:	Aliquot and store at -20°C. Avoid repeated freeze/thaw cycles.
UniProt Primary AC:	P28482 (UniProt , ExPASy) P27361 (UniProt , ExPASy)
Gene Symbol:	MAPK1, MAPK3
GeneID:	5594/5595
NCBI Accession:	NP_002736.3
String:	9606.ENSP00000263025
Molecular Weight:	Calculated MW: 36/41/38/40/43 kDa Observed MW: 44 kDa
Buffer:	PBS, pH 7.3, containing 0.05% Proclin-300, 50% glycerol.
Concentration:	> 0.2 mg/ml
Note:	THIS PRODUCT IS FOR RESEARCH USE ONLY. NOT FOR USE IN DIAGNOSTIC, THERAPEUTIC OR COSMETIC PROCEDURES. NOT FOR HUMAN OR ANIMAL CONSUMPTION.