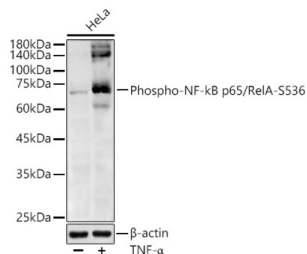
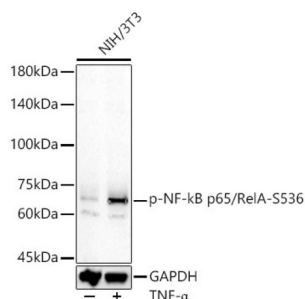


RELA (pS536) Antibody

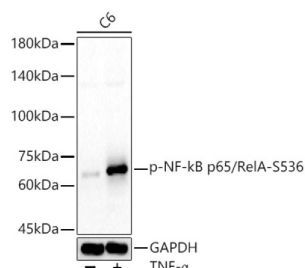
Catalogue No.: abx000518



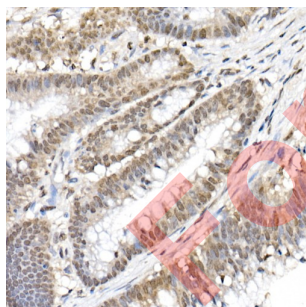
Western blot analysis of lysates from HeLa cells using Phospho-NF-kB p65/RelA-S536 Antibody at 1/1000 dilution. HeLa cells were treated by TNF- α (20 ng/ml) at 37 °C for 30 minutes. Secondary antibody: HRP-conjugated Goat anti-Rabbit IgG (H+L) at 1/10000 dilution. Lysates/proteins: 25 μ g per lane. Blocking buffer: 3% nonfat dry milk in TBST. Exposure time: 60s.



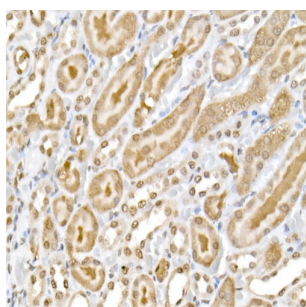
Western blot analysis of lysates from NIH/3T3 cells using Phospho-NF-kB p65/RelA-S536 Antibody at 1/600 dilution. NIH/3T3 cells were treated by TNF- α (20 ng/ml) at 37 °C for 30 minutes. Secondary antibody: HRP-conjugated Goat anti-Rabbit IgG (H+L) at 1/10000 dilution. Lysates/proteins: 25 μ g per lane. Blocking buffer: 3% nonfat dry milk in TBST. Exposure time: 60s.



Western blot analysis of lysates from C6 cells using Phospho-NF-kB p65/RelA-S536 Antibody at 1/600 dilution. C6 cells were treated by TNF- α (20 ng/ml) at 37 °C for 30 minutes. Secondary antibody: HRP-conjugated Goat anti-Rabbit IgG (H+L) at 1/10000 dilution. Lysates/proteins: 25 μ g per lane. Blocking buffer: 3% nonfat dry milk in TBST. Exposure time: 60s.



Immunohistochemistry analysis of paraffin-embedded Human colon carcinoma using Phospho-NF-kB p65/RelA-S536 Antibody at dilution of 1/50 (40x lens). High pressure antigen retrieval performed in 0.01 M Citrate buffer (pH 6.0) prior to IHC staining.



Immunohistochemistry analysis of paraffin-embedded Rat kidney using Phospho-NF-kB p65/RelA-S536 Antibody at dilution of 1/50 (40x lens). High pressure antigen retrieval performed in 0.01 M Citrate buffer (pH 6.0) prior to IHC staining.

Datasheet

Version: 4.0.0
Revision date: 04 Oct 2025



RELA (pS536) Antibody is a Rabbit Polyclonal antibody against RELA (pS536). NF-kappa-B is a ubiquitous transcription factor involved in several biological processes. It is held in the cytoplasm in an inactive state by specific inhibitors. Upon degradation of the inhibitor, NF-kappa-B moves to the nucleus and activates transcription of specific genes. NF-kappa-B is composed of NFKB1 or NFKB2 bound to either REL, RELA, or RELB. The most abundant form of NF-kappa-B is NFKB1 complexed with the product of this gene, RELA. Four transcript variants encoding different isoforms have been found for this gene.

Target:	RELA (pS536)
Clonality:	Polyclonal
Reactivity:	Human, Mouse, Rat
Tested Applications:	ELISA, WB, IHC
Host:	Rabbit
Recommended dilutions:	ELISA: 1 µg/ml, WB: 1/500 - 1/1000, IHC-P: 1/50 - 1/200. Not tested in IHC-F. Optimal dilutions/concentrations should be determined by the end user.
Conjugation:	Unconjugated
Immunogen:	A synthetic phosphorylated peptide around S536 of human NF-kB p65/RelA.
Isotype:	IgG
Form:	Liquid
Purification:	Purified by affinity chromatography.
Storage:	Aliquot and store at -20°C. Avoid repeated freeze/thaw cycles.
UniProt Primary AC:	Q04206 (UniProt , ExPASy)
Gene Symbol:	RELA
GeneID:	5970
NCBI Accession:	NP_068810.3
Molecular Weight:	Calculated MW: 60 kDa Observed MW: 65 kDa
Buffer:	PBS, pH 7.3, containing 0.05% Proclin-300, 50% glycerol.
Concentration:	> 0.2 mg/ml

Datasheet

Version: 4.0.0

Revision date: 04 Oct 2025



Note:

THIS PRODUCT IS FOR RESEARCH USE ONLY. NOT FOR USE IN DIAGNOSTIC, THERAPEUTIC OR COSMETIC PROCEDURES. NOT FOR HUMAN OR ANIMAL CONSUMPTION.

For Reference Only