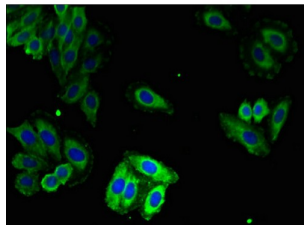


## Ryanodine Receptor 1, Skeletal (RYR1) Antibody

Catalogue No.: abx110194



IF analysis of HepG2 cells, using RYR1 antibody (1/100 dilution) and AF488-conjugated Goat anti-Rabbit secondary antibody.

RYR1 is a calcium channel that mediates the release of  $\text{Ca}^{2+}$  from the sarcoplasmic reticulum into the cytoplasm and thereby plays a key role in triggering muscle contraction following depolarization of t-tubules. Repeated very high-level exercise increases the open probability of the channel and leads to  $\text{Ca}^{2+}$  leaking into the cytoplasm. RYR1 can also mediate the release of  $\text{Ca}^{2+}$  from intracellular stores in neurons, and may thereby promote prolonged  $\text{Ca}^{2+}$  signaling in the brain. It is required for normal embryonic development of muscle fibers, skeletal muscle, normal heart morphogenesis, skin development and ossification.

<b>Target:</b>	Ryanodine Receptor 1, Skeletal (RYR1)
<b>Clonality:</b>	Polyclonal
<b>Reactivity:</b>	Human
<b>Tested Applications:</b>	ELISA, IF/ICC
<b>Host:</b>	Rabbit
<b>Recommended dilutions:</b>	IF/ICC: 1/50 - 1/200. Optimal dilutions/concentrations should be determined by the end user.
<b>Conjugation:</b>	Unconjugated
<b>Immunogen:</b>	Recombinant human Ryanodine receptor 1 protein (1-534 AA).
<b>Isotype:</b>	IgG
<b>Form:</b>	Liquid
<b>Purity:</b>	> 95%
<b>Purification:</b>	Purified by Protein G.
<b>Storage:</b>	Aliquot and store at $-20^{\circ}\text{C}$ . Avoid repeated freeze/thaw cycles.

# Datasheet

Version: 3.0.0  
Revision date: 01 Oct 2025



**UniProt Primary AC:** P21817 ([UniProt](#), [ExPASy](#))

**Gene Symbol:** RYR1

**GeneID:** [6261](#)

**OMIM:** [117000](#)

**NCBI Accession:** NP\_000531.2, NM\_000540.2

**KEGG:** hsa:6261

**String:** [9606.ENSP00000352608](#)

**Buffer:** 0.01 M PBS, pH 7.4, 0.03% Proclin-300 and 50% Glycerol.

**Concentration:** 1 mg/ml

**Note:** THIS PRODUCT IS FOR RESEARCH USE ONLY. NOT FOR USE IN DIAGNOSTIC, THERAPEUTIC OR COSMETIC PROCEDURES. NOT FOR HUMAN OR ANIMAL CONSUMPTION.

For Reference Only