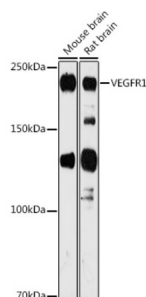
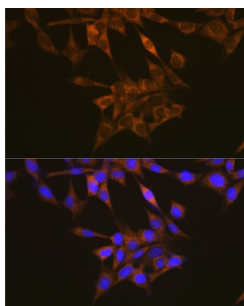


## Vascular Endothelial Growth Factor Receptor 1 (FLT1) Antibody

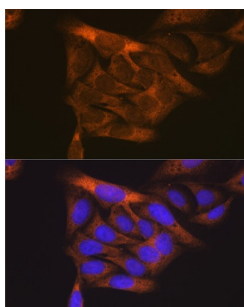
Catalogue No.: abx000538



Western blot analysis of extracts of various cell lines using VEGFR1 Antibody (1/1000 dilution).



Immunofluorescence analysis of NIH/3T3 cells using VEGFR1 Antibody (1/100 dilution). Blue: DAPI for nuclear staining.



Immunofluorescence analysis of U2OS cells using VEGFR1 Antibody (1/100 dilution). Blue: DAPI for nuclear staining.

FLT1 Antibody is a Rabbit Polyclonal antibody against FLT1. This gene encodes a member of the vascular endothelial growth factor receptor (VEGFR) family. VEGFR family members are receptor tyrosine kinases (RTKs) which contain an extracellular ligand-binding region with seven immunoglobulin (Ig)-like domains, a transmembrane segment, and a tyrosine kinase (TK) domain within the cytoplasmic domain. This protein binds to VEGFR-A, VEGFR-B and placental growth factor and plays an important role in angiogenesis and vasculogenesis. Expression of this receptor is found in vascular endothelial cells, placental trophoblast cells and peripheral blood monocytes. Multiple transcript variants encoding different isoforms have been found for this gene. Isoforms include a full-length transmembrane receptor isoform and shortened, soluble isoforms. The soluble isoforms are associated with the onset of pre-eclampsia.

**Target:** Vascular Endothelial Growth Factor Receptor 1 (FLT1)

**Clonality:** Polyclonal

**Reactivity:** Human, Mouse, Rat

**Tested Applications:** WB, IF/ICC

# Datasheet

Version: 5.0.0  
Revision date: 03 Sep 2025



**Host:** Rabbit

**Recommended dilutions:** WB: 1/200 - 1/2000, IF/ICC: 1/50 - 1/200. Optimal dilutions/concentrations should be determined by the end user.

**Conjugation:** Unconjugated

**Immunogen:** Recombinant fusion protein corresponding to human VEGFR1

**Isotype:** IgG

**Form:** Liquid

**Purification:** Purified by affinity chromatography.

**Storage:** Aliquot and store at -20°C. Avoid repeated freeze/thaw cycles.

**UniProt Primary AC:** P17948 ([UniProt](#), [ExPASy](#))

**Gene Symbol:** FLT1

**GeneID:** [2321](#)

**NCBI Accession:** NP\_002010.2

**Molecular Weight:** Calculated MW: 39 kDa/41 kDa/52- 82 kDa/150 kDa  
Observed MW: 200 kDa

**Buffer:** PBS, pH 7.3, containing 0.01% thiomersal, 50% glycerol.

**Concentration:** 1 mg/ml

**Note:** THIS PRODUCT IS FOR RESEARCH USE ONLY. NOT FOR USE IN DIAGNOSTIC, THERAPEUTIC OR COSMETIC PROCEDURES. NOT FOR HUMAN OR ANIMAL CONSUMPTION.