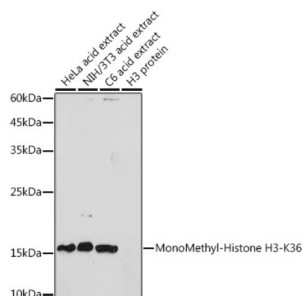
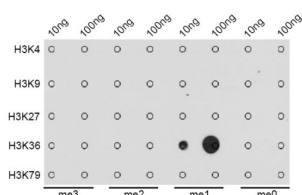


## Histone H3K36me1 Antibody

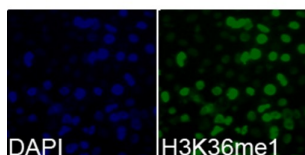
Catalogue No.: abx000011



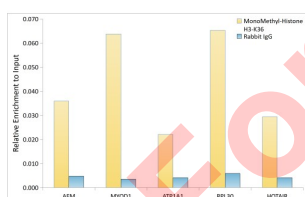
Western blot analysis of various lysates using MonoMethyl-Histone H3-K36 Antibody at 1/1000 dilution. Secondary antibody: HRP-conjugated Goat anti-Rabbit IgG (H+L) at 1/10000 dilution. Lysates/proteins: 25 µg per lane. Blocking buffer: 3% nonfat dry milk in TBST. Exposure time: 180s.



Dot-blot analysis of all sorts of methylation peptides using MonoMethyl-Histone H3-K36 antibody.



Immunofluorescence analysis of 293T cells using MonoMethyl-Histone H3-K36 Antibody. Blue: DAPI for nuclear staining.



Chromatin immunoprecipitation analysis of extracts of HeLa cells, using MonoMethyl-Histone H3-K36 antibody and rabbit IgG. The amount of immunoprecipitated DNA was checked by quantitative PCR. Histogram was constructed by the ratios of the immunoprecipitated DNA to the input.

Histone H3K36me1 Antibody is a Rabbit Polyclonal antibody against Histone H3K36me1. Histones are basic nuclear proteins that are responsible for the nucleosome structure of the chromosomal fiber in eukaryotes. Nucleosomes consist of approximately 146 bp of DNA wrapped around a histone octamer composed of pairs of each of the four core histones (H2A, H2B, H3, and H4). The chromatin fiber is further compacted through the interaction of a linker histone, H1, with the DNA between the nucleosomes to form higher order chromatin structures. This gene is intronless and encodes a member of the histone H3 family. Transcripts from this gene lack polyA tails; instead, they contain a palindromic termination element. This gene is located separately from the other H3 genes that are in the histone gene cluster on chromosome 6p22-p21.3.

# Datasheet

Version: 6.0.0  
Revision date: 30 Sep 2025



<b>Target:</b>	Histone H3K36me1
<b>Clonality:</b>	Polyclonal
<b>Reactivity:</b>	Human, Mouse, Rat
<b>Tested Applications:</b>	ELISA, WB, IF/ICC, ChIP
<b>Host:</b>	Rabbit
<b>Recommended dilutions:</b>	ELISA: 1 µg/ml, WB: 1/500 - 1/1000, IF/ICC: 1/50 - 1/200, ChIP: 6.5 µg antibody per 5 µg - 10 µg of Chromatin, ChIP-seq: 1/20 - 1/100. Optimal dilutions/concentrations should be determined by the end user.
<b>Conjugation:</b>	Unconjugated
<b>Immunogen:</b>	Synthetic peptide corresponding to Histone H3K36me1. The exact sequence is proprietary.
<b>Isotype:</b>	IgG
<b>Form:</b>	Liquid
<b>Purification:</b>	Purified by affinity chromatography.
<b>Storage:</b>	Aliquot and store at -20°C. Avoid repeated freeze/thaw cycles.
<b>UniProt Primary AC:</b>	Q16695 ( <a href="#">UniProt</a> , <a href="#">ExPASy</a> )
<b>Gene Symbol:</b>	HIST3H3
<b>GeneID:</b>	<a href="#">8290</a>
<b>NCBI Accession:</b>	NP_003520.1
<b>KEGG:</b>	hsa:8290
<b>String:</b>	<a href="#">9606.ENSP00000355657</a>
<b>Molecular Weight:</b>	Calculated MW: 16 kDa Observed MW: 17 kDa
<b>Buffer:</b>	PBS, pH 7.3, containing 0.09% sodium azide, 50% glycerol.
<b>Concentration:</b>	0.507 mg/ml

# Datasheet

Version: 6.0.0

Revision date: 30 Sep 2025



**Note:**

THIS PRODUCT IS FOR RESEARCH USE ONLY. NOT FOR USE IN DIAGNOSTIC, THERAPEUTIC OR COSMETIC PROCEDURES. NOT FOR HUMAN OR ANIMAL CONSUMPTION.

For Reference Only