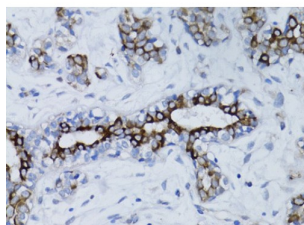


Breast Cancer Type 1 Susceptibility Protein (BRCA1) Antibody

Catalogue No.: abx000600



Immunohistochemistry of paraffin-embedded human breast cancer using BRCA1 Antibody (1/100 dilution, 40x lens). Microwave antigen retrieval was performed in 10 mM PBS buffer pH 7.2 before commencing with IHC staining protocol.

BRCA1 Antibody is a Rabbit Polyclonal antibody against BRCA1. This gene encodes a nuclear phosphoprotein that plays a role in maintaining genomic stability, and it also acts as a tumor suppressor. The encoded protein combines with other tumor suppressors, DNA damage sensors, and signal transducers to form a large multi-subunit protein complex known as the BRCA1-associated genome surveillance complex (BASC). This gene product associates with RNA polymerase II, and through the C-terminal domain, also interacts with histone deacetylase complexes. This protein thus plays a role in transcription, DNA repair of double-stranded breaks, and recombination. Mutations in this gene are responsible for approximately 40% of inherited breast cancers and more than 80% of inherited breast and ovarian cancers. Alternative splicing plays a role in modulating the subcellular localization and physiological function of this gene. Many alternatively spliced transcript variants, some of which are disease-associated mutations, have been described for this gene, but the full-length nature of only some of these variants has been described. A related pseudogene, which is also located on chromosome 17, has been identified.

Target:	Breast Cancer Type 1 Susceptibility Protein (BRCA1)
Clonality:	Polyclonal
Reactivity:	Human
Tested Applications:	IHC
Host:	Rabbit
Recommended dilutions:	IHC-P: 1/50 - 1/200. Not tested in IHC-F. Optimal dilutions/concentrations should be determined by the end user.
Conjugation:	Unconjugated
Immunogen:	A synthetic peptide corresponding to human BRCA1
Isotype:	IgG
Form:	Liquid
Purification:	Purified by affinity chromatography.

Datasheet

Version: 4.0.0
Revision date: 31 Jul 2025



Storage: Aliquot and store at -20°C. Avoid repeated freeze/thaw cycles.

UniProt Primary AC: P38398 ([UniProt](#), [ExPASy](#))

Gene Symbol: BRCA1

GeneID: [672](#)

NCBI Accession: NP_009225.1

KEGG: hsa:672

String: [9606.ENSP00000418960](#)

Molecular Weight: Calculated MW: 7 kDa/78-85 kDa/202-210 kDa

Buffer: PBS, pH 7.3, containing 0.02% sodium azide, 50% glycerol.

Concentration: 1 mg/ml

Note: THIS PRODUCT IS FOR RESEARCH USE ONLY. NOT FOR USE IN DIAGNOSTIC, THERAPEUTIC OR COSMETIC PROCEDURES. NOT FOR HUMAN OR ANIMAL CONSUMPTION.

For Reference Only