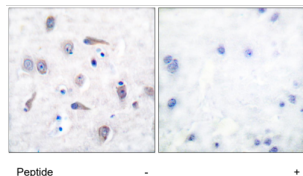
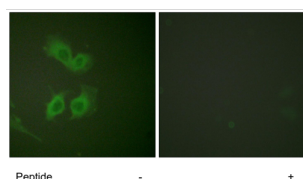


## Amyloid-beta Precursor Protein (APP) Antibody

Catalogue No.: abx119003



IHC-P analysis of Human brain tissue using Amyloid-beta Precursor Protein Antibody, with peptide treatment (right).



IF analysis of HeLa cells, using Amyloid-beta Precursor Protein Antibody, with peptide treatment (right).

Amyloid-beta Precursor Protein Antibody is a Rabbit Polyclonal antibody against Amyloid  $\beta$  A4.

<b>Target:</b>	Amyloid-beta Precursor Protein (APP)
<b>Clonality:</b>	Polyclonal
<b>Reactivity:</b>	Human, Mouse, Rat
<b>Tested Applications:</b>	ELISA, WB, IHC, IF/ICC
<b>Host:</b>	Rabbit
<b>Recommended dilutions:</b>	ELISA: 1/40000, WB: 1/500-1/3000, IHC: 1/50-1/100, IF/ICC: 1/100-1/500. Optimal dilutions/concentrations should be determined by the end user.
<b>Conjugation:</b>	Unconjugated
<b>Immunogen:</b>	The antiserum was produced against synthesized non-phosphopeptide derived from Human Amyloid $\beta$ A4 around the phosphorylation site of threonine743/668 (A-V-TP-P-E).
<b>Isotype:</b>	IgG
<b>Form:</b>	Liquid
<b>Purification:</b>	Purified from rabbit antiserum by affinity chromatography using epitope-specific immunogen.

# Datasheet

Version: 4.0.0

Revision date: 25 Jun 2025



<b>Storage:</b>	Aliquot and store at -20°C. Avoid repeated freeze/thaw cycles.
<b>UniProt Primary AC:</b>	P05067 ( <a href="#">UniProt</a> , <a href="#">ExPASy</a> )
<b>Sequence:</b>	CEVDAAVTPEERHL
<b>Buffer:</b>	PBS (without Mg <sup>2+</sup> and Ca <sup>2+</sup> ), pH 7.4, 150 mM NaCl, 0.02% sodium azide, 50% glycerol.
<b>Specificity:</b>	Detects endogenous levels of total Amyloid β A4 protein.
<b>Concentration:</b>	1 mg/ml
<b>Note:</b>	THIS PRODUCT IS FOR RESEARCH USE ONLY. NOT FOR USE IN DIAGNOSTIC, THERAPEUTIC OR COSMETIC PROCEDURES. NOT FOR HUMAN OR ANIMAL CONSUMPTION.

For Reference Only