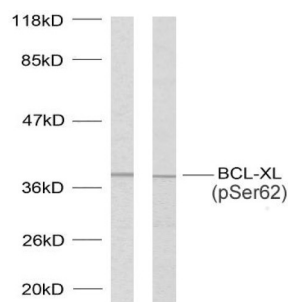
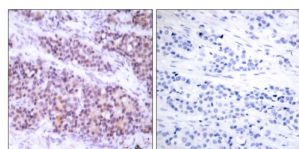


## Apoptosis Regulator Bcl-X Phospho-Ser62 (BCL-XL pS62) Antibody

Catalogue No.: abx119182



Western blot analysis of lysates from 293 cells treated with UV and MDA-MB-435 cells treated with UV, using BCL-XL (pS62) Antibody.



Immunohistochemistry analysis of paraffin-embedded human breast carcinoma, using BCL-XL (pS62) Antibody. The picture on the right is blocked with the phosphopeptide.

BCL-XL (pS62) Antibody is a Rabbit Polyclonal antibody against BCL-XL (pS62).

**Target:** Apoptosis Regulator Bcl-X Phospho-Ser62 (BCL-XL pS62)

**Clonality:** Polyclonal

**Target Modification:** Ser62

**Modification:** Phosphorylation

**Reactivity:** Human, Mouse, Rat

**Tested Applications:** ELISA, WB, IHC

**Host:** Rabbit

**Recommended dilutions:** ELISA: 1/10000, WB: 1/500 - 1/3000, IHC: 1/50 - 1/100. Optimal dilutions/concentrations should be determined by the end user.

**Conjugation:** Unconjugated

**Immunogen:** Synthesized phosphopeptide derived from human BCL-XL around the phosphorylation site of serine 62 (A-D-S<sup>P</sup>-P-A).

# Datasheet

Version: 2.0.0  
Revision date: 30 Apr 2025



|                     |  |
|---------------------|--|
| Isotype:            | IgG  |
| Form:               | Liquid   |
| Purification:       | Purified from rabbit antiserum by affinity chromatography using epitope-specific phosphopeptide. The antibody against non-phosphopeptide was removed by chromatography using non-phosphopeptide corresponding to the phosphorylation site. |
| Storage:            | Aliquot and store at -20°C. Avoid repeated freeze/thaw cycles.   |
| UniProt Primary AC: | Q07817 ( <a href="#">UniProt</a> , <a href="#">ExPASy</a> )  |
| KEGG:               | hsa:598  |
| String:             | <a href="#">9606.ENSP00000302564</a>   |
| Sequence:           | CSWHLADSPAVNGA   |
| Buffer:             | PBS (without $Mg^{2+}$ and $Ca^{2+}$ ), pH 7.4, 150 mM NaCl, 0.02% sodium azide, 50% glycerol.   |
| Specificity:        | Detects endogenous levels of BCL-XL only when phosphorylated at serine 62.   |
| Concentration:      | 1 mg/ml  |
| Note:               | THIS PRODUCT IS FOR RESEARCH USE ONLY. NOT FOR USE IN DIAGNOSTIC, THERAPEUTIC OR COSMETIC PROCEDURES. NOT FOR HUMAN OR ANIMAL CONSUMPTION.   |