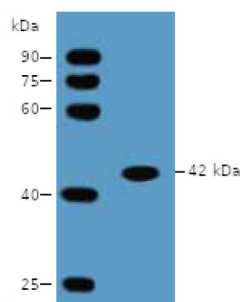
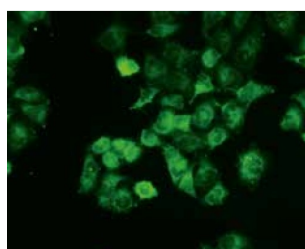


## Beta Actin (ACTB) Antibody

Catalogue No.: abx118009



Western blot analysis of HEK293 lysate using Beta Actin (ACTB) Antibody.



Immunofluorescence analysis of HEK293 cells using Beta Actin (ACTB) Antibody.

$\beta$ -Actin antibody is a mouse monoclonal antibody. The actin protein is an essential component of cytoskeleton. It is widely present in mammalian cells, and has a high level of expression in most tissues and cells. It is commonly used as expression control.

**Target:** Beta Actin (ACTB)

**Clonality:** Monoclonal

**Tested Applications:** ELISA, WB, IF/ICC

**Host:** Mouse

**Recommended dilutions:** WB: 1/500 - 10000, ELISA: 1/500 - 5000, IF/ICC: 1/100 - 500. Optimal dilutions/concentrations should be determined by the end user.

**Conjugation:** Unconjugated

**Immunogen:** (Ac) DDDIAALVC.

**Storage:** Aliquot and store at -20°C. Avoid repeated freeze/thaw cycles.

**Note:** THIS PRODUCT IS FOR RESEARCH USE ONLY. NOT FOR USE IN DIAGNOSTIC, THERAPEUTIC OR COSMETIC PROCEDURES. NOT FOR HUMAN OR ANIMAL CONSUMPTION.