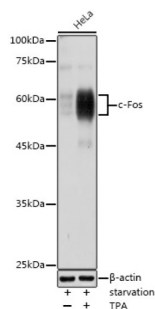
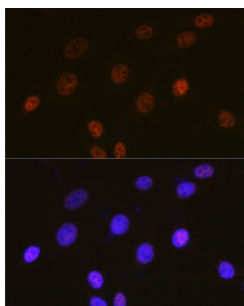


Proto-Oncogene C-Fos (FOS) Antibody

Catalogue No.: abx000621



Western blot analysis of extracts of HeLa cells using c-Fos Antibody (1/1000 dilution). HeLa cells were treated by PMA/TPA (200 nM) at 37°C for 15 minutes after serum-starvation overnight.



Immunofluorescence analysis of NIH/3T3 cells using c-Fos Antibody (1/100 dilution, 40x lens). Blue: DAPI for nuclear staining.

FOS Antibody is a Rabbit Polyclonal antibody against FOS. The Fos gene family consists of 4 members: FOS, FOSB, FOSL1, and FOSL2. These genes encode leucine zipper proteins that can dimerize with proteins of the JUN family, thereby forming the transcription factor complex AP-1. As such, the FOS proteins have been implicated as regulators of cell proliferation, differentiation, and transformation. In some cases, expression of the FOS gene has also been associated with apoptotic cell death.

Target: Proto-Oncogene C-Fos (FOS)

Clonality: Polyclonal

Reactivity: Human, Mouse

Tested Applications: WB, IF/ICC

Host: Rabbit

Recommended dilutions: WB: 1/500 - 1/2000, IF/ICC: 1/50 - 1/200. Optimal dilutions/concentrations should be determined by the end user.

Conjugation: Unconjugated

Immunogen: Recombinant protein corresponding to human c-Fos

Isotype: IgG

Datasheet

Version: 5.0.0

Revision date: 21 Aug 2025



Form:	Liquid
Purification:	Purified by affinity chromatography.
Storage:	Aliquot and store at -20°C. Avoid repeated freeze/thaw cycles.
UniProt Primary AC:	P01100 (UniProt , ExPASy)
Gene Symbol:	FOS
GeneID:	2353
NCBI Accession:	NP_005243.1
KEGG:	hsa:2353
String:	9606.ENSP00000306245
Molecular Weight:	Calculated MW: 28 kDa/36 kDa/40 kDa Observed MW: 55-60 kDa
Buffer:	PBS, pH 7.3, containing 0.01% thiomersal, 50% glycerol.
Concentration:	1 mg/ml
Note:	THIS PRODUCT IS FOR RESEARCH USE ONLY. NOT FOR USE IN DIAGNOSTIC, THERAPEUTIC OR COSMETIC PROCEDURES. NOT FOR HUMAN OR ANIMAL CONSUMPTION.