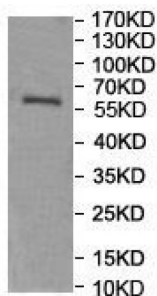
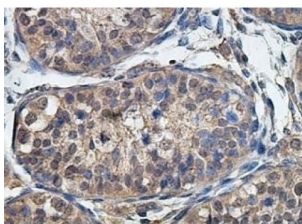


Leucine-Rich Repeat-Containing Protein 56 (LRRC56) Antibody

Catalogue No.: abx122828



WB analysis of PC-3M cell lysate using Leucine-Rich Repeat-Containing Protein 56 (LRRC56) Antibody.



IHC-P analysis of fetal testis tissue using Leucine-Rich Repeat-Containing Protein 56 (LRRC56) Antibody.

Leucine-Rich Repeat-Containing Protein 56 (LRRC56) Antibody is a Rabbit polyclonal against Human Leucine-Rich Repeat-Containing Protein 56 (LRRC56).

Target: Leucine-Rich Repeat-Containing Protein 56 (LRRC56)

Research Area: Signal Transduction

Clonality: Polyclonal

Reactivity: Human

Tested Applications: ELISA, WB, IHC

Host: Rabbit

Recommended dilutions: ELISA: 1/20000 - 1/80000, WB: 1/1000, IHC: 1/100 - 1/200. Optimal dilutions/concentrations should be determined by the end user.

Conjugation: Unconjugated

Immunogen: Recombinant fragment corresponding to 55-225 AA of Human LRRC56.

Isotype: IgG

Datasheet

Version: 3.0.0

Revision date: 11 Sep 2025



Form:	Lyophilized
Purification:	Purified by antigen affinity column chromatography.
Reconstitution:	Reconstitute in 100 µl of sterile distilled H ₂ O with 50% glycerol.
Storage:	Store at -20°C. Avoid repeated freeze/thaw cycles.
NCBI Accession:	BC016439
Molecular Weight:	Observed MW: 60 kDa (Recombinant Protein)
Buffer:	Prior to lyophilization: 1% BSA and 0.02% NaN ₃ .
Specificity:	Predicted to react with Mouse and Rat LRRC56.
Concentration:	Lyophilized form: Not applicable. After reconstitution: 1 mg/ml.
Note:	THIS PRODUCT IS FOR RESEARCH USE ONLY. NOT FOR USE IN DIAGNOSTIC, THERAPEUTIC OR COSMETIC PROCEDURES. NOT FOR HUMAN OR ANIMAL CONSUMPTION.

For Reference Only