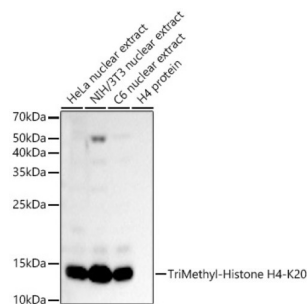
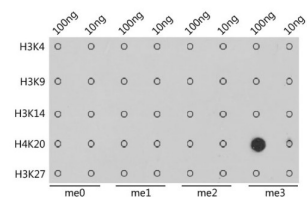


Histone H4K20me3 Antibody

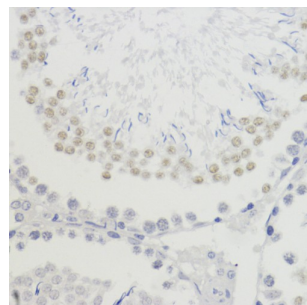
Catalogue No.: abx000019



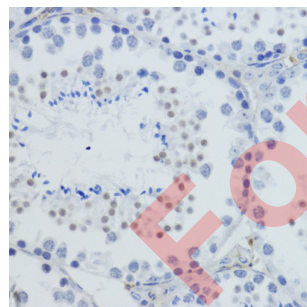
Western blot analysis of various lysates, using TriMethyl-Histone H4-K20 Antibody at 1/400 dilution. Secondary antibody: HRP-conjugated Goat anti-Rabbit IgG (H+L) at 1/10000 dilution. Lysates/proteins: 25 µg per lane. Blocking buffer: 3% nonfat dry milk in TBST. Exposure time: 60s.



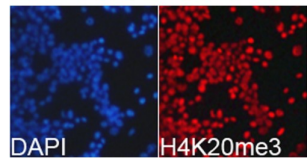
Dot-blot analysis of all sorts of methylation peptides using TriMethyl-Histone H4-K20 antibody.



Immunohistochemistry analysis of paraffin-embedded Rat testis using TriMethyl-Histone H4-K20 Antibody at dilution of 1/200 (40x lens). Microwave antigen retrieval performed in 0.01 M PBS Buffer (pH 7.2) prior to IHC staining.



Immunohistochemistry analysis of paraffin-embedded Mouse testis using TriMethyl-Histone H4-K20 Antibody at dilution of 1/200 (40x lens). Microwave antigen retrieval performed in 0.01 M PBS Buffer (pH 7.2) prior to IHC staining.



Immunofluorescence analysis of 293T cells using TriMethyl-Histone H4-K20 Antibody. Blue: DAPI for nuclear staining.

Datasheet

Version: 4.0.0
Revision date: 06 Oct 2025



Histone H4K20me3 Antibody is a Rabbit Polyclonal antibody against Histone H4K20me3. Histones are basic nuclear proteins that are responsible for the nucleosome structure of the chromosomal fiber in eukaryotes. This structure consists of approximately 146 bp of DNA wrapped around a nucleosome, an octamer composed of pairs of each of the four core histones (H2A, H2B, H3, and H4). The chromatin fiber is further compacted through the interaction of a linker histone, H1, with the DNA between the nucleosomes to form higher order chromatin structures. This gene is intronless and encodes a member of the histone H4 family. Transcripts from this gene lack polyA tails; instead, they contain a palindromic termination element. This gene is found in a histone cluster on chromosome 1. This gene is one of four histone genes in the cluster that are duplicated; this record represents the centromeric copy.

Target:	Histone H4K20me3
Clonality:	Polyclonal
Reactivity:	Human, Mouse, Rat
Tested Applications:	ELISA, WB, IHC, IF/ICC, DB
Host:	Rabbit
Recommended dilutions:	ELISA: 1 µg/ml, WB: 1/500 - 1/2000, IHC-P: 1/50 - 1/200, IF/ICC: 1/50 - 1/200, DB: 1/500 - 1/2000. Not tested in IHC-F. Optimal dilutions/concentrations should be determined by the end user.
Conjugation:	Unconjugated
Immunogen:	Synthetic peptide corresponding to Histone H4K20me3. The exact sequence is proprietary.
Isotype:	IgG
Form:	Liquid
Purification:	Purified by affinity chromatography.
Storage:	Aliquot and store at -20°C. Avoid repeated freeze/thaw cycles.
UniProt Primary AC:	P62805 (UniProt , ExPASy)
Gene Symbol:	H4C14
GeneID:	8370
NCBI Accession:	NP_003529.1
KEGG:	hsa:121504, hsa:554313, hsa:8294, hsa:8359, hsa:8360, hsa:8361, hsa:8362, hsa:8363, hsa:8364, hsa:8365, hsa:8366, hsa:8367, hsa:8368, hsa:8370
String:	9606.ENSP00000484789

Datasheet

Version: 4.0.0

Revision date: 06 Oct 2025



Molecular Weight: Calculated MW: 11 kDa
Observed MW: 11 kDa

Buffer: PBS, pH 7.3, containing 0.02% sodium azide, 50% glycerol.

Concentration: 3.05 mg/ml

Note: THIS PRODUCT IS FOR RESEARCH USE ONLY. NOT FOR USE IN DIAGNOSTIC, THERAPEUTIC OR COSMETIC PROCEDURES. NOT FOR HUMAN OR ANIMAL CONSUMPTION.

For Reference Only