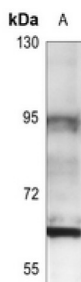
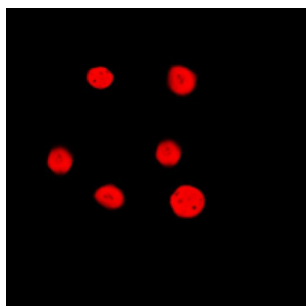


## Estrogen Receptor 2 (ESR2) Antibody

Catalogue No.: abx121395



Western blot analysis of Estrogen Receptor 2 expression in (A) U87MG whole cell lysates.



Immunofluorescent analysis of Estrogen Receptor 2 staining in HeLa cells. Formalin-fixed cells were permeabilized with 0.1% Triton X-100 in TBS for 5-10 minutes and blocked with 3% BSA-PBS for 30 minutes at room temperature. Cells were probed with the primary antibody in 3% BSA-PBS and incubated overnight at 4 °C in a humidified chamber. Cells were washed with PBST and incubated with a DL 594-conjugated secondary antibody (red) in PBS at room temperature in the dark. DAPI was used to stain the cell nuclei (blue).

Rabbit polyclonal antibody against Estrogen Receptor 2.

**Target:** Estrogen Receptor 2 (ESR2)

**Clonality:** Polyclonal

**Reactivity:** Human, Mouse, Rat, Dog

**Tested Applications:** WB, IF/ICC

**Host:** Rabbit

**Recommended dilutions:** WB: 1/500 - 1/1000, IF/ICC: 1/100 - 1/500. Optimal dilutions/concentrations should be determined by the end user.

**Conjugation:** Unconjugated

**Immunogen:** KLH-conjugated synthetic peptide encompassing a sequence within the middle region of human Estrogen Receptor beta. The exact sequence is proprietary.

**Form:** Liquid

**Purification:** Purified by immunogen affinity chromatography.

**Storage:** Aliquot and store at -20°C. Avoid repeated freeze/thaw cycles.

# Datasheet

Version: 4.0.0

Revision date: 15 Mar 2025



**UniProt Primary AC:** Q92731 ([UniProt](#), [ExPASy](#)) O08537 ([UniProt](#), [ExPASy](#)) Q62986 ([UniProt](#), [ExPASy](#))

**GeneID:** [2100](#) [13983](#) [25149](#)

**Buffer:** 0.42% Potassium phosphate, 0.87% Sodium chloride, pH 7.3, 30% glycerol and 0.01% sodium azide.

**Specificity:** Detects endogenous levels of Estrogen Receptor beta protein.

**Concentration:** 1 mg/ml

**Note:** THIS PRODUCT IS FOR RESEARCH USE ONLY. NOT FOR USE IN DIAGNOSTIC, THERAPEUTIC OR COSMETIC PROCEDURES. NOT FOR HUMAN OR ANIMAL CONSUMPTION.

For Reference Only