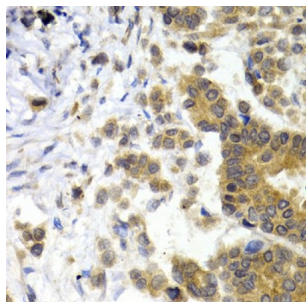
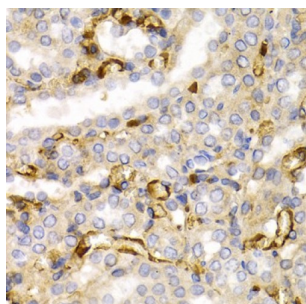


## Neurofilament, Light Polypeptide (NEFL) Antibody

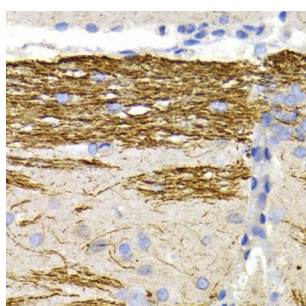
Catalogue No.: abx000642



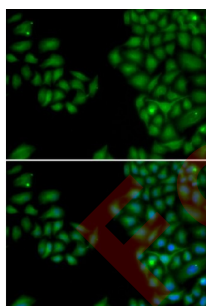
Immunohistochemistry of paraffin-embedded Human breast cancer using NEFL Antibody (1/200 dilution, 40x lens).



Immunohistochemistry of paraffin-embedded Rat kidney using NEFL Antibody (1/200 dilution, 40x lens).



Immunohistochemistry of paraffin-embedded Rat brain using NEFL Antibody (1/200 dilution, 40x lens).



Immunofluorescence analysis of HeLa cells using NEFL Antibody

NEFL Antibody is a Rabbit Polyclonal antibody against NEFL. Neurofilaments are type IV intermediate filament heteropolymers composed of light, medium, and heavy chains. Neurofilaments comprise the axoskeleton and they functionally maintain the neuronal caliber. They may also play a role in intracellular transport to axons and dendrites. This gene encodes the light chain neurofilament protein. Mutations in this gene cause Charcot-Marie-Tooth disease types 1F (CMT1F) and 2E (CMT2E), disorders of the peripheral nervous system that are characterized by distinct neuropathies. A pseudogene has been identified on chromosome Y.

**Target:** Neurofilament, Light Polypeptide (NEFL)

# Datasheet

Version: 4.0.0  
Revision date: 05 Oct 2025



**Clonality:** Polyclonal

**Reactivity:** Human, Mouse, Rat

**Tested Applications:** IHC, IF/ICC

**Host:** Rabbit

**Recommended dilutions:** IHC-P: 1/50 - 1/200, IF/ICC: 1/50 - 1/200. Not tested in IHC-F. Optimal dilutions/concentrations should be determined by the end user.

**Conjugation:** Unconjugated

**Immunogen:** Recombinant fusion protein corresponding to human NEFL

**Isotype:** IgG

**Form:** Liquid

**Purification:** Purified by affinity chromatography.

**Storage:** Aliquot and store at -20°C. Avoid repeated freeze/thaw cycles.

**UniProt Primary AC:** P07196 ([UniProt](#), [ExPASy](#))

**Gene Symbol:** NEFL

**GeneID:** [4747](#)

**NCBI Accession:** NP\_006149.2

**KEGG:** hsa:4747

**String:** [9606.ENSP00000482169](#)

**Buffer:** PBS, pH 7.3, containing 0.02% sodium azide, 50% glycerol.

**Concentration:** 1 mg/ml

**Note:** THIS PRODUCT IS FOR RESEARCH USE ONLY. NOT FOR USE IN DIAGNOSTIC, THERAPEUTIC OR COSMETIC PROCEDURES. NOT FOR HUMAN OR ANIMAL CONSUMPTION.