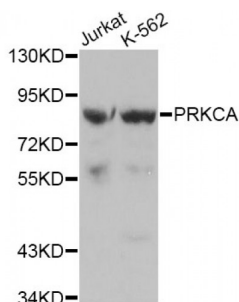
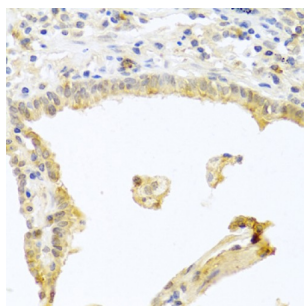


## Protein Kinase C Alpha (PRKCA) Antibody

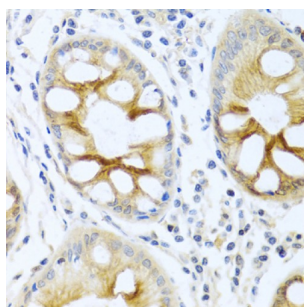
Catalogue No.: abx000652



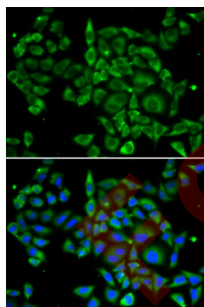
Western blot analysis of extracts of various cell lines, using PRKCA antibody (abx000652).



Immunohistochemistry of paraffin-embedded human lung cancer using PRKCA antibody (abx000652) at dilution of 1/100 (40x lens).



Immunohistochemistry of paraffin-embedded human colon using PRKCA antibody (abx000652) at dilution of 1/100 (40x lens).



Immunofluorescence analysis of U2OS cells using PRKCA antibody (abx000652). Blue: DAPI for nuclear staining.

PRKCA Antibody is a Rabbit Polyclonal antibody against PRKCA. Protein kinase C (PKC) is a family of serine- and threonine-specific protein kinases that can be activated by calcium and the second messenger diacylglycerol. PKC family members phosphorylate a wide variety of protein targets and are known to be involved in diverse cellular signaling pathways. PKC family members also serve as major receptors for phorbol esters, a class of tumor promoters. Each member of the PKC family has a specific expression profile and is believed to play a distinct role in cells. The protein encoded by this gene is one of the PKC family members. This kinase has been reported to play roles in many different cellular processes, such as cell adhesion, cell transformation, cell cycle checkpoint, and cell volume control. Knockout studies in mice suggest that this kinase may be a fundamental regulator of cardiac contractility and Ca(2+) handling in myocytes.

# Datasheet

Version: 6.0.0  
Revision date: 23 May 2024



<b>Target:</b>	Protein Kinase C Alpha (PRKCA)
<b>Clonality:</b>	Polyclonal
<b>Reactivity:</b>	Human, Mouse, Rat
<b>Tested Applications:</b>	WB, IHC
<b>Host:</b>	Rabbit
<b>Recommended dilutions:</b>	WB: 1/100 - 1/500, IHC-P: 1/50 - 1/200. Not tested in IHC-F. Optimal dilutions/concentrations should be determined by the end user.
<b>Conjugation:</b>	Unconjugated
<b>Immunogen:</b>	A synthetic peptide corresponding to a sequence within amino acids 573-672 of human PKC alpha.
<b>Isotype:</b>	IgG
<b>Form:</b>	Liquid
<b>Purification:</b>	Purified by affinity chromatography.
<b>Storage:</b>	Aliquot and store at -20°C. Avoid repeated freeze/thaw cycles.
<b>UniProt Primary AC:</b>	P17252 ( <a href="#">UniProt</a> , <a href="#">ExPASy</a> )
<b>Gene Symbol:</b>	PRKCA
<b>GeneID:</b>	<a href="#">5578</a>
<b>NCBI Accession:</b>	NP_002728.2
<b>KEGG:</b>	hsa:5578
<b>String:</b>	<a href="#">9606.ENSP00000408695</a>
<b>Molecular Weight:</b>	Calculated MW: 77 kDa Observed MW: 80 kDa
<b>Buffer:</b>	PBS, pH 7.3, containing 0.05% Proclin-300, 50% glycerol.
<b>Concentration:</b>	> 0.2 mg/ml
<b>Note:</b>	This product is for research use only.