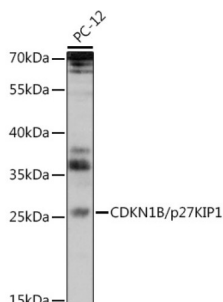


## Cyclin Dependent Kinase Inhibitor 1B (CDKN1B) Antibody

Catalogue No.: abx000672



Western blot analysis of extracts of PC-12 cells using CDKN1B/p27KIP1 Antibody (1/1000 dilution).

CDKN1B Antibody is a Rabbit Polyclonal antibody against CDKN1B. This gene encodes a cyclin-dependent kinase inhibitor, which shares a limited similarity with CDK inhibitor CDKN1A/p21. The encoded protein binds to and prevents the activation of cyclin E-CDK2 or cyclin D-CDK4 complexes, and thus controls the cell cycle progression at G1. The degradation of this protein, which is triggered by its CDK dependent phosphorylation and subsequent ubiquitination by SCF complexes, is required for the cellular transition from quiescence to the proliferative state. Mutations in this gene are associated with multiple endocrine neoplasia type IV (MEN4).

<b>Target:</b>	Cyclin Dependent Kinase Inhibitor 1B (CDKN1B)
<b>Clonality:</b>	Polyclonal
<b>Reactivity:</b>	Human, Mouse, Rat
<b>Tested Applications:</b>	WB
<b>Host:</b>	Rabbit
<b>Recommended dilutions:</b>	WB: 1/500 - 1/1000. Optimal dilutions/concentrations should be determined by the end user.
<b>Conjugation:</b>	Unconjugated
<b>Immunogen:</b>	Recombinant fusion protein corresponding to human CDKN1B/p27KIP1
<b>Isotype:</b>	IgG
<b>Form:</b>	Liquid
<b>Purification:</b>	Purified by affinity chromatography.
<b>Storage:</b>	Aliquot and store at -20°C. Avoid repeated freeze/thaw cycles.
<b>UniProt Primary AC:</b>	P46527 ( <a href="#">UniProt</a> , <a href="#">ExPASy</a> )

# Datasheet

Version: 5.0.0

Revision date: 20 Sep 2025



**Gene Symbol:** CDKN1B

**GeneID:** [1027](#)

**NCBI Accession:** NP\_004055.1

**KEGG:** hsa:1027

**String:** [9606.ENSP00000228872](#)

**Molecular Weight:** Calculated MW: 22 kDa  
Observed MW: 26 kDa

**Buffer:** PBS, pH 7.3, containing 0.02% sodium azide, 50% glycerol.

**Concentration:** 1 mg/ml

**Note:** THIS PRODUCT IS FOR RESEARCH USE ONLY. NOT FOR USE IN DIAGNOSTIC, THERAPEUTIC OR COSMETIC PROCEDURES. NOT FOR HUMAN OR ANIMAL CONSUMPTION.

For Reference Only