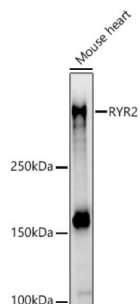
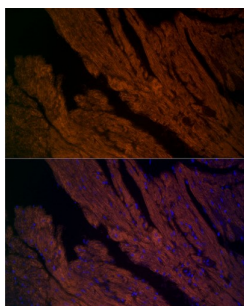


Ryanodine Receptor 2 (RYR2) Antibody

Catalogue No.: abx000677



Western blot analysis of extracts of Mouse heart using RYR2 Antibody (1/500 dilution).



Immunofluorescence analysis of mouse heart cells using RYR2 Antibody (1/200 dilution, 40x lens). Blue: DAPI for nuclear staining.

RYR2 Antibody is a Rabbit Polyclonal antibody against RYR2. RYR2 belongs to the ryanodine receptor family. RYR2 provides communication between transverse-tubules and sarcoplasmic reticulum. Contraction of cardiac muscle is triggered by release of calcium ions from SR following depolarization of T-tubules. Defects in RYR2 are the cause of familial arrhythmogenic right ventricular dysplasia type 2 (ARVD2) which known as arrhythmogenic right ventricular cardiomyopathy 2 (ARVC2). Defects in RYR2 are the cause of catecholaminergic polymorphic ventricular tachycardia type 1 (CPVT1) which known as stress-induced polymorphic ventricular tachycardia (VTSP). This gene encodes a ryanodine receptor found in cardiac muscle sarcoplasmic reticulum. The encoded protein is one of the components of a calcium channel, composed of a tetramer of the ryanodine receptor proteins and a tetramer of FK506 binding protein 1B proteins, that supplies calcium to cardiac muscle. Mutations in this gene are associated with stress-induced polymorphic ventricular tachycardia and arrhythmogenic right ventricular dysplasia. [provided by RefSeq, Jul 2008].

Target: Ryanodine Receptor 2 (RYR2)

Clonality: Polyclonal

Reactivity: Human, Mouse, Rat

Tested Applications: WB, IF/ICC

Host: Rabbit

Recommended dilutions: WB: 1/500 - 1/2000, IF/ICC: 1/50 - 1/200. Optimal dilutions/concentrations should be determined by the end user.

Conjugation: Unconjugated

Datasheet

Version: 6.0.0
Revision date: 05 Mar 2025



Immunogen:	A synthetic peptide corresponding to human RYR2
Isotype:	IgG
Form:	Liquid
Purification:	Purified by affinity chromatography.
Storage:	Aliquot and store at -20°C. Avoid repeated freeze/thaw cycles.
UniProt Primary AC:	Q92736 (UniProt , ExPASy)
Gene Symbol:	RYR2
GeneID:	6262
NCBI Accession:	NP_001026.2
KEGG:	hsa:6262
String:	9606.ENSP00000355533
Molecular Weight:	Calculated MW: 564 kDa/565 kDa Observed MW: 564 kDa
Buffer:	PBS, pH 7.3, containing 0.05% Proclin-300, 50% glycerol.
Concentration:	1 mg/ml
Note:	THIS PRODUCT IS FOR RESEARCH USE ONLY. NOT FOR USE IN DIAGNOSTIC, THERAPEUTIC OR COSMETIC PROCEDURES. NOT FOR HUMAN OR ANIMAL CONSUMPTION.