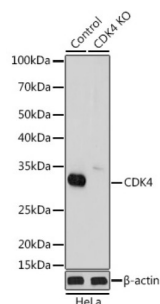
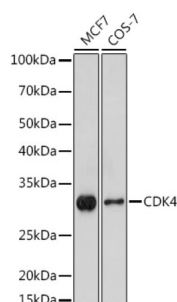


Cyclin-Dependent Kinase 4 (CDK4) Antibody

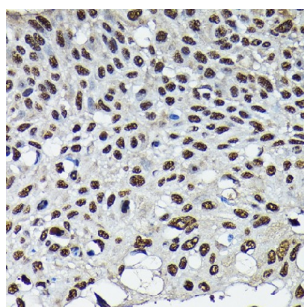
Catalogue No.: abx000696



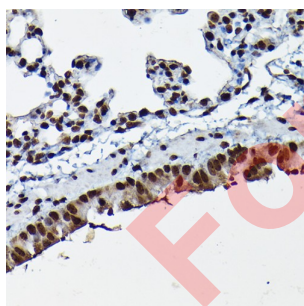
Western blot analysis of extracts from normal (control) and CDK4 knockout (KO) HeLa cells, using CDK4 Antibody (1/1000 dilution).



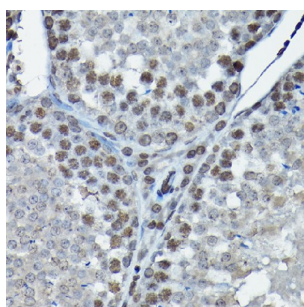
Western blot analysis of extracts of various cell lines using CDK4 Antibody (1/1000 dilution).



Immunohistochemistry of paraffin-embedded human lung cancer using CDK4 Antibody (1/100 dilution, 40x lens). High pressure antigen retrieval was performed in 10 mM citrate buffer pH 6.0 before commencing with IHC staining protocol.



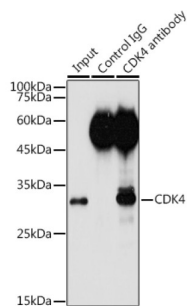
Immunohistochemistry of paraffin-embedded mouse lung using CDK4 Antibody (1/100 dilution, 40x lens). High pressure antigen retrieval was performed in 10 mM citrate buffer pH 6.0 before commencing with IHC staining protocol.



Immunohistochemistry of paraffin-embedded rat testis using CDK4 Antibody (1/100 dilution, 40x lens). High pressure antigen retrieval was performed in 10 mM citrate buffer pH 6.0 before commencing with IHC staining protocol.

Datasheet

Version: 3.0.0
Revision date: 26 Jun 2025



Immunoprecipitation analysis of extracts of HeLa cells (300 µg) using CDK4 Antibody (3 µg). Western blot was performed from the immunoprecipitate using CDK4 Antibody (1/1000 dilution).

CDK4 Antibody is a Rabbit Polyclonal antibody against CDK4. The protein encoded by this gene is a member of the Ser/Thr protein kinase family. This protein is highly similar to the gene products of *S. cerevisiae* cdc28 and *S. pombe* cdc2. It is a catalytic subunit of the protein kinase complex that is important for cell cycle G1 phase progression. The activity of this kinase is restricted to the G1-S phase, which is controlled by the regulatory subunits D-type cyclins and CDK inhibitor p16(INK4a). This kinase was shown to be responsible for the phosphorylation of retinoblastoma gene product (Rb). Mutations in this gene as well as in its related proteins including D-type cyclins, p16(INK4a) and Rb were all found to be associated with tumorigenesis of a variety of cancers. Multiple polyadenylation sites of this gene have been reported.

Target:	Cyclin-Dependent Kinase 4 (CDK4)
Clonality:	Polyclonal
Reactivity:	Human, Mouse, Rat
Tested Applications:	WB, IHC, IP
Host:	Rabbit
Recommended dilutions:	WB: 1/500 - 1/2000, IHC-P: 1/50 - 1/200, IP: 1/50 - 1/200. Not tested in IHC-F. Optimal dilutions/concentrations should be determined by the end user.
Conjugation:	Unconjugated
Immunogen:	A synthetic peptide corresponding to human CDK4
Isotype:	IgG
Form:	Liquid
Purification:	Purified by affinity chromatography.
Storage:	Aliquot and store at -20°C. Avoid repeated freeze/thaw cycles.
UniProt Primary AC:	P11802 (UniProt , ExPASy)
Gene Symbol:	CDK4

Datasheet

Version: 3.0.0

Revision date: 26 Jun 2025



GeneID: [1019](#)

NCBI Accession: NP_000066.1

KEGG: hsa:1019

String: [9606.ENSP00000257904](#)

Molecular Weight: Calculated MW: 20 kDa/33 kDa
Observed MW: 30 kDa

Buffer: PBS, pH 7.3, containing 0.01% thiomersal, 50% glycerol.

Concentration: 1 mg/ml

Note: THIS PRODUCT IS FOR RESEARCH USE ONLY. NOT FOR USE IN DIAGNOSTIC, THERAPEUTIC OR COSMETIC PROCEDURES. NOT FOR HUMAN OR ANIMAL CONSUMPTION.

For Reference Only