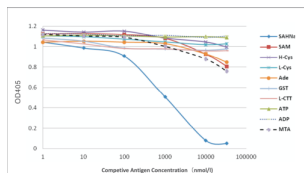
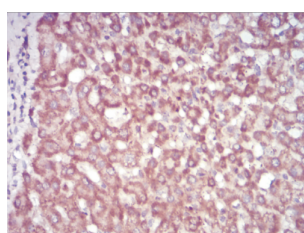


S-Adenosyl-L-Homocysteine (SAH) Antibody

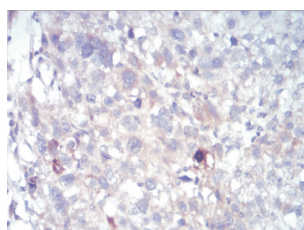
Catalogue No.: abx120511



Competitive ELISA using anti-S-Adenosyl-L-Homocysteine monoclonal antibody ([abx120511](#)). The 0.5 µg/ml of SAH-BSA was coated into 96 wells. Serial dilution of SAH standard (SAHNa), S-Adenosyl-L-Homocysteine, Homocysteine (H-Cys), L-Cysteine (L-Cys), Adenosine (Ade), Glutathione (GST), L-Cystathionine (L-CTT), Methylothioadenosine (MTA), ADP (Adenosine Diphosphate), ATP (Adenosine Triphosphate) and properly diluted ([abx120511](#)) were added. HRP conjugated Goat anti-Mouse IgG antibody was used to develop the color. OD450 value was measured on each well.



Immunohistochemistry staining was performed using [abx120511](#) with benign liver tissue adjacent to carcinoma. Brown areas indicated strong positive staining in nuclear and cytoplasmic areas (x400).



The same samples as in Figure 2 from liver cancer area. Cytoplasmic and nuclear areas showed negative staining (x400).

S-Adenosyl-L-Homocysteine (SAH) Antibody is a mouse monoclonal antibody against S-Adenosyl-L-Homocysteine.

Target: S-Adenosyl-L-Homocysteine (SAH)

Clonality: Monoclonal

Clone: Q103

Reactivity: General

Tested Applications: ELISA, IHC, FCM

Host: Mouse

Recommended dilutions: Competitive ELISA: 1/4000 - 1/8000, IHC: 1/200, FCM: 1/200. Optimal dilutions/concentrations should be determined by the end user.

Datasheet

Version: 7.0.0
Revision date: 11 Oct 2025



Conjugation:	Unconjugated
Immunogen:	S-Adenosylhomocysteine conjugated to BSA.
Isotype:	IgG ₃
Form:	Liquid
Biological Activity:	Affinity: $K_a = 8.32 \times 10^8$ L/mol (1.20×10^{-9} M).
Purity:	> 95%
Purification:	Purified from mouse ascites by affinity chromatography.
Storage:	Aliquot and store at -20°C. Avoid repeated freeze/thaw cycles.
Buffer:	10 mM PBS, pH 7.4, containing 150 mM NaCl, 0.02% NaN ₃ , 10 mg/ml BSA and 50% glycerol.
Specificity:	<u>Cross-reactivity:</u> S-Adenosylhomocysteine: 100% S-Adenosylmethionine: < 3% Adenosine: < 1% Homocysteine: < 1% L-Cysteine: < 1% Glutathione: < 1% L-Cystathione: < 1% Methylthioadenosine (MTA): < 5% Adenosine diphosphate (ADP): < 1% Adenosine triphosphate: < 1%
Concentration:	1 mg/ml
Note:	THIS PRODUCT IS FOR RESEARCH USE ONLY. NOT FOR USE IN DIAGNOSTIC, THERAPEUTIC OR COSMETIC PROCEDURES. NOT FOR HUMAN OR ANIMAL CONSUMPTION.