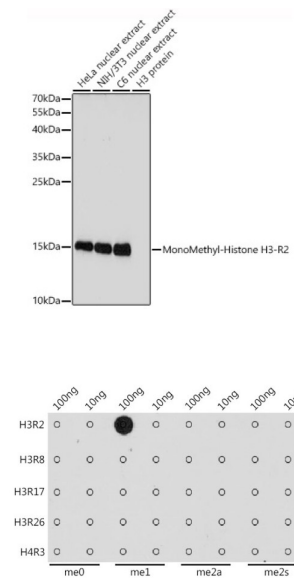


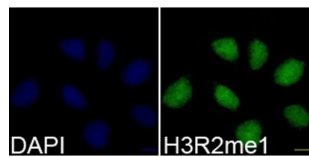
Histone H3R2me1 Antibody

Catalogue No.:abx000028



Western blot analysis of various lysates using MonoMethyl-Histone H3-R2 Antibody at 1/1000 dilution. Secondary antibody: HRP-conjugated Goat anti-Rabbit IgG (H+L) at 1/10000 dilution. Lysates/proteins: 25 µg per lane. Blocking buffer: 3% nonfat dry milk in TBST. Exposure time: 20s.

Dot-blot analysis of all sorts of methylation peptides using MonoMethyl-Histone H3-R2 antibody at 1/1000 dilution.



Immunofluorescence analysis of 293T cells using MonoMethyl-Histone H3-R2 Antibody. Blue: DAPI for nuclear staining.

Histone H3R2me1 Antibody is a Rabbit Polyclonal antibody against Histone H3R2me1. Histones are basic nuclear proteins that are responsible for the nucleosome structure of the chromosomal fiber in eukaryotes. Nucleosomes consist of approximately 146 bp of DNA wrapped around a histone octamer composed of pairs of each of the four core histones (H2A, H2B, H3, and H4). The chromatin fiber is further compacted through the interaction of a linker histone, H1, with the DNA between the nucleosomes to form higher order chromatin structures. This gene is intronless and encodes a member of the histone H3 family. Transcripts from this gene lack polyA tails; instead, they contain a palindromic termination element. This gene is located separately from the other H3 genes that are in the histone gene cluster on chromosome 6p22-p21.3.

Target: Histone H3R2me1

Clonality: Polyclonal

Reactivity: Human, Mouse, Rat

Tested Applications: ELISA, WB, IF/ICC

Datasheet

Version: 4.0.0
Revision date: 17 Jun 2025



Host:	Rabbit
Recommended dilutions:	ELISA: 1 µg/ml, WB: 1/500 - 1/1000, IF/ICC: 1/50 - 1/200. Optimal dilutions/concentrations should be determined by the end user.
Conjugation:	Unconjugated
Immunogen:	A synthetic monomethylated peptide around R2 of human histone H3.
Isotype:	IgG
Form:	Liquid
Purification:	Purified by affinity chromatography.
Storage:	Aliquot and store at -20°C. Avoid repeated freeze/thaw cycles.
UniProt Primary AC:	Q16695 (UniProt , ExPASy)
Gene Symbol:	HIST3H3
GeneID:	8290
NCBI Accession:	NP_003520.1
KEGG:	hsa:8290
String:	9606.ENSP00000355657
Molecular Weight:	Calculated MW: 16 kDa Observed MW: 17 kDa
Buffer:	PBS, pH 7.3, containing 0.02% sodium azide, 50% glycerol.
Concentration:	> 0.2 mg/ml
Note:	THIS PRODUCT IS FOR RESEARCH USE ONLY. NOT FOR USE IN DIAGNOSTIC, THERAPEUTIC OR COSMETIC PROCEDURES. NOT FOR HUMAN OR ANIMAL CONSUMPTION.