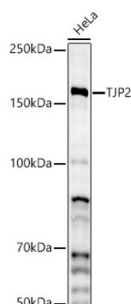
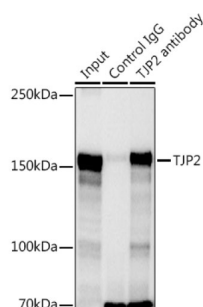


## Tight Junction Protein ZO-2 (TJP2) Antibody

Catalogue No.: abx000775



Western blot analysis of lysates from HeLa cells, using TJP2 Antibody at 1/2000 dilution. Secondary antibody: HRP-conjugated Goat anti-Rabbit IgG (H+L) at 1/10000 dilution. Lysates/proteins: 25 µg per lane. Blocking buffer: 3% nonfat dry milk in TBST. Exposure time: 90s.



Immunoprecipitation analysis of 300 µg extracts of HeLa cells using 3 µg TJP2 antibody. Western blot was performed from the immunoprecipitate using TJP2 antibody at a dilution of 1/1000.

TJP2 Antibody is a Rabbit Polyclonal antibody against TJP2. This gene encodes a zonula occluden that is a member of the membrane-associated guanylate kinase homolog family. The encoded protein functions as a component of the tight junction barrier in epithelial and endothelial cells and is necessary for proper assembly of tight junctions. Mutations in this gene have been identified in patients with hypercholanemia, and genomic duplication of a 270 kb region including this gene causes autosomal dominant deafness-51. Alternatively spliced transcripts encoding multiple isoforms have been observed for this gene. [provided by RefSeq, Nov 2011].

**Target:** Tight Junction Protein ZO-2 (TJP2)

**Clonality:** Polyclonal

**Reactivity:** Human, Mouse

**Tested Applications:** ELISA, WB, IP

**Host:** Rabbit

**Recommended dilutions:** ELISA: 1 µg/ml, WB: 1/500 - 1/2000, IP: 0.5 µg - 4 µg antibody per 200 µg - 400 µg extracts of whole cells. Optimal dilutions/concentrations should be determined by the end user.

**Conjugation:** Unconjugated

**Immunogen:** Recombinant fusion protein containing a sequence corresponding to amino acids 951-1190 of human TJP2.

**Isotype:** IgG

# Datasheet

Version: 4.0.0

Revision date: 05 Mar 2025



<b>Form:</b>	Liquid
<b>Purification:</b>	Purified by affinity chromatography.
<b>Storage:</b>	Aliquot and store at -20°C. Avoid repeated freeze/thaw cycles.
<b>UniProt Primary AC:</b>	Q9UDY2 ( <a href="#">UniProt</a> , <a href="#">ExPASy</a> )
<b>Gene Symbol:</b>	TJP2
<b>GeneID:</b>	<a href="#">9414</a>
<b>NCBI Accession:</b>	NP_004808.2
<b>String:</b>	<a href="#">9606.ENSP00000438262</a>
<b>Molecular Weight:</b>	Calculated MW: 134 kDa Observed MW: 160 kDa
<b>Buffer:</b>	PBS, pH 7.3, containing 0.02% sodium azide, 50% glycerol.
<b>Concentration:</b>	> 0.2 mg/ml
<b>Note:</b>	THIS PRODUCT IS FOR RESEARCH USE ONLY. NOT FOR USE IN DIAGNOSTIC, THERAPEUTIC OR COSMETIC PROCEDURES. NOT FOR HUMAN OR ANIMAL CONSUMPTION.