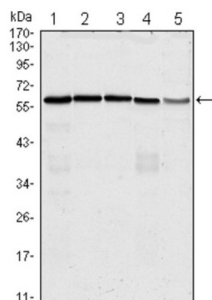
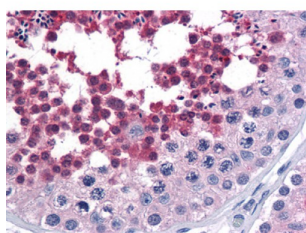


## Cell Division Cycle 25C (CDC25C) Antibody

Catalogue No.: abx010324



Western blot analysis using anti-CDC25C antibody against Hela (1), K562 (2), PC-3 (3), HEK293 (4) and Raw264.7 (5) cell lysate.



Immunohistochemical analysis of paraffin-embedded human Testis tissues using anti-CDC25C antibody.

A member of the MPI phosphatase family. Activates the cyclin dependent kinase CDC2 by removing two phosphate groups and it is required for entry into mitosis. Shuttles between the nucleus and the cytoplasm due to nuclear localization and nuclear export signals. The protein is nuclear in the M and G1 phases of the cell cycle and moves to the cytoplasm during S and G2. CDC25B has oncogenic properties, although its role in tumor formation has not been determined. At least four transcript variants for this gene exist. Three splice variant isoforms have been described.

<b>Target:</b>	Cell Division Cycle 25C (CDC25C)
<b>Clonality:</b>	Monoclonal
<b>Reactivity:</b>	Human
<b>Tested Applications:</b>	ELISA, WB, IHC
<b>Host:</b>	Mouse
<b>Recommended dilutions:</b>	ELISA: 1/10000, WB: 1/500 - 1/2000, IHC: 1/200 - 1/1000. Optimal dilutions/concentrations should be determined by the end user.
<b>Conjugation:</b>	Unconjugated
<b>Immunogen:</b>	Purified recombinant fragment of human CDC25C expressed in E. coli.
<b>Isotype:</b>	IgG <sub>1</sub>

# Datasheet

Version: 2.0.0

Revision date: 03 Jul 2025



<b>Form:</b>	Liquid
<b>Purification:</b>	Unpurified ascites.
<b>Storage:</b>	Aliquot and store at -20°C. Avoid repeated freeze/thaw cycles.
<b>UniProt Primary AC:</b>	P30307 ( <a href="#">UniProt</a> , <a href="#">ExPASy</a> )
<b>Gene Symbol:</b>	CDC25C
<b>GeneID:</b>	<a href="#">995</a>
<b>OMIM:</b>	<a href="#">157680</a>
<b>HGNC:</b>	1727
<b>KEGG:</b>	hsa:995
<b>Ensembl:</b>	ENSG00000158402
<b>String:</b>	<a href="#">9606.ENSP00000321656</a>
<b>Enzyme Commission Number:</b>	EC 3.1.3.48
<b>Molecular Weight:</b>	58 kDa
<b>Buffer:</b>	Ascitic fluid containing 0.03% sodium azide.
<b>Concentration:</b>	Not determined.
<b>Note:</b>	THIS PRODUCT IS FOR RESEARCH USE ONLY. NOT FOR USE IN DIAGNOSTIC, THERAPEUTIC OR COSMETIC PROCEDURES. NOT FOR HUMAN OR ANIMAL CONSUMPTION.