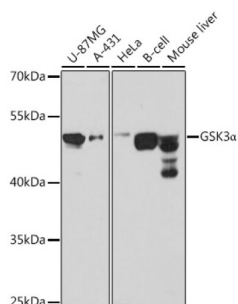
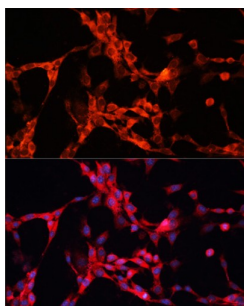


Glycogen Synthase Kinase 3 Alpha (GSK3A) Antibody

Catalogue No.: abx000794



Western blot analysis of various lysates using GSK3 α Antibody at 1/1000 dilution. Secondary antibody: HRP-conjugated Goat anti-Rabbit IgG (H+L) at 1/10000 dilution. Lysates/proteins: 25 μ g per lane. Blocking buffer: 3% nonfat dry milk in TBST. Exposure time: 10s.



Immunofluorescence analysis of NIH/3T3 cells using GSK3 α Antibody at dilution of 1/100. Secondary antibody: Cy3-conjugated Goat anti-Rabbit IgG (H+L) at 1/500 dilution. Blue: DAPI for nuclear staining.

GSK3A Antibody is a Rabbit Polyclonal antibody against GSK3A. This gene encodes a multifunctional Ser/Thr protein kinase that is implicated in the control of several regulatory proteins including glycogen synthase, and transcription factors, such as JUN. It also plays a role in the WNT and PI3K signaling pathways, as well as regulates the production of beta-amyloid peptides associated with Alzheimer's disease. [provided by RefSeq, Oct 2011].

Target: Glycogen Synthase Kinase 3 Alpha (GSK3A)

Clonality: Polyclonal

Reactivity: Human, Mouse

Tested Applications: ELISA, WB, IF/ICC

Host: Rabbit

Recommended dilutions: ELISA: 1 μ g/ml, WB: 1/500 - 1/1000, IF/ICC: 1/20 - 1/100. Optimal dilutions/concentrations should be determined by the end user.

Conjugation: Unconjugated

Immunogen: Recombinant fusion protein containing a sequence corresponding to amino acids 409-483 of human GSK3 α .

Isotype: IgG

Datasheet

Version: 4.0.0

Revision date: 14 Jun 2025



| | |
|----------------------------|--|
| Form: | Liquid |
| Purification: | Purified by affinity chromatography. |
| Storage: | Aliquot and store at -20°C. Avoid repeated freeze/thaw cycles. |
| UniProt Primary AC: | P49840 (UniProt , ExPASy) |
| Gene Symbol: | GSK3A |
| GeneID: | 2931 |
| NCBI Accession: | NP_063937.2 |
| KEGG: | hsa:2931 |
| String: | 9606.ENSP00000222330 |
| Molecular Weight: | Calculated MW: 51 kDa Observed MW: 51 kDa |
| Buffer: | PBS, pH 7.3, containing 0.02% sodium azide, 50% glycerol. |
| Concentration: | > 0.2 mg/ml |
| Note: | THIS PRODUCT IS FOR RESEARCH USE ONLY. NOT FOR USE IN DIAGNOSTIC, THERAPEUTIC OR COSMETIC PROCEDURES. NOT FOR HUMAN OR ANIMAL CONSUMPTION. |