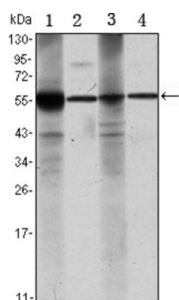
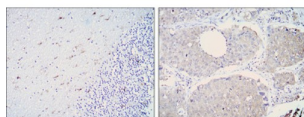


Retinal Dehydrogenase 1 (ALDH1A1) Antibody

Catalogue No.: abx010374



Western blot analysis using ALDH1A1 antibody against Raji (1), Jurkat (2), THP-1 (3) and K562 (4) cell lysates.



Immunohistochemical analysis of paraffin-embedded cerebellum tissues (left) and lung cancer (right) using ALDH1A1 antibody with DAB staining.

ALDH1A1 is an aldehyde dehydrogenase able to oxidize a wide variety of aliphatic aldehydes (retinaldehyde, acetaldehyde, etc.) to the corresponding carboxylic acids (retinoic acid, acetic acid, etc.). ALDH1A1 (also known as RALDH1, ALDH1, or AHD2) is highly expressed in the dorsal retina, ventral midbrain (dopaminergic neurons), and hematopoietic stem cells. ALDH1A1 is involved in retinoic acid (RA) synthesis during vertebrate embryogenesis. ALDH1A1 is first detected at E9.0-E10.5 in cranial tissues (ventral mesencephalon, dorsal retina, thymic primordia, optic vesicles) and in the mesonephros.

Target: Retinal Dehydrogenase 1 (ALDH1A1)

Clonality: Monoclonal

Clone: H836

Reactivity: Human

Tested Applications: ELISA, WB, IHC

Host: Mouse

Recommended dilutions: ELISA: 1/10000, WB: 1/500 - 1/2000, IHC: 1/200 - 1/1000. Optimal dilutions/concentrations should be determined by the end user.

Conjugation: Unconjugated

Immunogen: Purified recombinant fragment of human ALDH1A1 expressed in E. coli.

Datasheet

Version: 4.0.0
Revision date: 20 Aug 2025



Isotype:	IgG ₁
Form:	Liquid
Purification:	Unpurified ascites.
Storage:	Aliquot and store at -20°C. Avoid repeated freeze/thaw cycles.
UniProt Primary AC:	P00352 (UniProt , ExPASy)
Gene Symbol:	ALDH1A1
GeneID:	216
OMIM:	100640
HGNC:	402
KEGG:	hsa:216
Ensembl:	ENSG00000165092
String:	9606.ENSP00000297785
Molecular Weight:	55 kDa
Buffer:	Ascitic fluid containing 0.03% sodium azide.
Concentration:	Not determined.
Note:	THIS PRODUCT IS FOR RESEARCH USE ONLY. NOT FOR USE IN DIAGNOSTIC, THERAPEUTIC OR COSMETIC PROCEDURES. NOT FOR HUMAN OR ANIMAL CONSUMPTION.