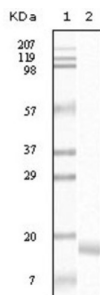
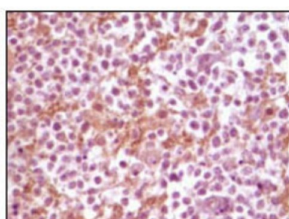


Alpha Synuclein (SNCA) Antibody

Catalogue No.: abx010381



Western blot analysis using SNCA antibody against truncated SNCA recombinant protein.



Immunohistochemical analysis of paraffin-embedded human glioma tissue, showing membrane localization using SNCA antibody with DAB staining.

alpha synuclein is a member of the synuclein family, which also includes beta and gamma synuclein. Synucleins are abundantly expressed in the brain and alpha and beta synuclein inhibit phospholipase D2 selectively. SNCA may serve to integrate presynaptic signaling and membrane trafficking. Defects in SNCA have been implicated in the pathogenesis of Parkinson disease. SNCA peptides are a major component of amyloid plaques in the brains of patients with Alzheimer's disease. Two alternatively spliced transcripts of SNCA have been identified. Additional splicing may be present but the full-length nature of these variants has not been determined.

Target: Alpha Synuclein (SNCA)

Clonality: Monoclonal

Reactivity: Human

Tested Applications: ELISA, IHC

Host: Mouse

Recommended dilutions: ELISA: 1/10000, IHC: 1/200 - 1/1000. Optimal dilutions/concentrations should be determined by the end user.

Conjugation: Unconjugated

Immunogen: Purified recombinant fragment of SNCA expressed in E. coli.

Isotype: IgG₁

Datasheet

Version: 3.0.0

Revision date: 21 Sep 2025



Form:	Liquid
Purification:	Unpurified ascites.
Storage:	Aliquot and store at -20°C. Avoid repeated freeze/thaw cycles.
UniProt Primary AC:	P37840 (UniProt , ExPASy)
Gene Symbol:	SNCA
GeneID:	6622
OMIM:	127750
HGNC:	11138
Ensembl:	ENSG00000145335
Molecular Weight:	18 kDa
Buffer:	Ascitic fluid containing 0.03% sodium azide.
Concentration:	Not determined.
Note:	THIS PRODUCT IS FOR RESEARCH USE ONLY. NOT FOR USE IN DIAGNOSTIC, THERAPEUTIC OR COSMETIC PROCEDURES. NOT FOR HUMAN OR ANIMAL CONSUMPTION.