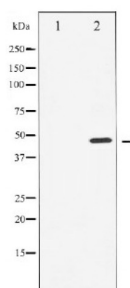


## Cyclin E1 (CCNE1) Antibody

Catalogue No.: abx010506



Western blot analysis of Cyclin E1 expression in Paclitaxel treated HeLa whole cell lysates. The lane on the left is treated with the antigen-specific peptide.

Cyclin E1 antibody detects endogenous levels of total Cyclin E1. CCNE1 a member of the highly conserved cyclin family, whose members are characterized by a dramatic periodicity in protein abundance through the cell cycle. Cyclins function as regulators of CDK kinases. Forms a complex with and functions as a regulatory subunit of CDK2, whose activity is required for cell cycle G1/S transition. Accumulates at the G1-S phase boundary and is degraded as cells progress through S phase. Two alternatively spliced isoforms have been described.

**Target:** Cyclin E1 (CCNE1)

**Clonality:** Polyclonal

**Reactivity:** Human

**Tested Applications:** WB

**Host:** Rabbit

**Recommended dilutions:** WB: 1/500 - 1/2000. Optimal dilutions/concentrations should be determined by the end user.

**Conjugation:** Unconjugated

**Immunogen:** Synthesised peptide derived from human Cyclin E1

**Form:** Liquid

**Purification:** Purified by immunogen affinity chromatography.

**Storage:** Aliquot and store at -20°C. Avoid repeated freeze/thaw cycles.

**Gene Symbol:** CCNE1

**Ensembl:** ENSG00000105173

# Datasheet

Version: 2.0.0

Revision date: 11 Oct 2025



**Molecular Weight:** 48 kDa

**Buffer:** PBS, pH 7.3, containing 0.05% sodium azide and 50% glycerol.

**Specificity:** Cyclin E1 Antibody detects endogenous levels of total Cyclin E1

**Concentration:** 1 mg/ml

**Note:** THIS PRODUCT IS FOR RESEARCH USE ONLY. NOT FOR USE IN DIAGNOSTIC, THERAPEUTIC OR COSMETIC PROCEDURES. NOT FOR HUMAN OR ANIMAL CONSUMPTION.

For Reference Only