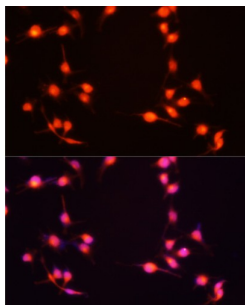
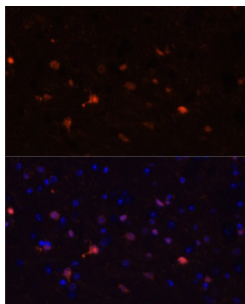


S100 Calcium Binding Protein B (S100B) Antibody

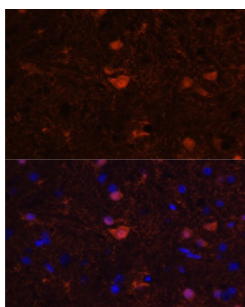
Catalogue No.: abx000811



Immunofluorescence analysis of U-251MG cells using S100B Antibody (1/100 dilution, 20x lens). Blue: DAPI for nuclear staining.



Immunofluorescence analysis of Mouse brain using S100B Antibody (1/100 dilution). Blue: DAPI for nuclear staining.



Immunofluorescence analysis of Rat brain using S100B Antibody (1/100 dilution). Blue: DAPI for nuclear staining.

S100B Antibody is a Rabbit Polyclonal antibody against S100B. The protein encoded by this gene is a member of the S100 family of proteins containing 2 EF-hand calcium-binding motifs. S100 proteins are localized in the cytoplasm and/or nucleus of a wide range of cells, and involved in the regulation of a number of cellular processes such as cell cycle progression and differentiation. S100 genes include at least 13 members which are located as a cluster on chromosome 1q21; however, this gene is located at 21q22.3. This protein may function in Neurite extension, proliferation of melanoma cells, stimulation of Ca²⁺ fluxes, inhibition of PKC-mediated phosphorylation, astrocytosis and axonal proliferation, and inhibition of microtubule assembly. Chromosomal rearrangements and altered expression of this gene have been implicated in several neurological, neoplastic, and other types of diseases, including Alzheimer's disease, Down's syndrome, epilepsy, amyotrophic lateral sclerosis, melanoma, and type I diabetes.

Target: S100 Calcium Binding Protein B (S100B)

Clonality: Polyclonal

Reactivity: Human, Mouse, Rat

Tested Applications: IF/ICC

Datasheet

Version: 4.0.0
Revision date: 22 Dec 2025



Host: Rabbit

Recommended dilutions: IF/ICC: 1/50 - 1/200. Optimal dilutions/concentrations should be determined by the end user.

Conjugation: Unconjugated

Immunogen: Recombinant fusion protein corresponding to human S100B

Isotype: IgG

Form: Liquid

Purification: Purified by affinity chromatography.

Storage: Aliquot and store at -20°C. Avoid repeated freeze/thaw cycles.

UniProt Primary AC: P04271 ([UniProt](#), [ExPASy](#))

Gene Symbol: S100B

GeneID: [6285](#)

NCBI Accession: NP_006263.1

KEGG: hsa:6285

String: [9606.ENSP00000291700](#)

Buffer: PBS, pH 7.3, containing 0.02% sodium azide, 50% glycerol.

Concentration: 1 mg/ml

Note: THIS PRODUCT IS FOR RESEARCH USE ONLY. NOT FOR USE IN DIAGNOSTIC, THERAPEUTIC OR COSMETIC PROCEDURES. NOT FOR HUMAN OR ANIMAL CONSUMPTION.